



25 MAY – 8 JULY, 2021

WI-FI: POWERING INNOVATION SERIES

Creating new possibilities for Carriers,
Enterprise, Cities and Things.

**#WGCAmericas | #wifirevolution
#lovewifi**



JUNE 30, 2021

Connected Cities Get Smarter with Wi-Fi in the 5G Era

#WGCAmericas | #wifirevolution
#lovewifi

Wi-Fi Powering Innovation Series

Full Program Agenda

May 25th & 26th – WBA Members Only Working Sessions

May 27th – WBA Members Only Working Sessions: **Briefing for Asia-based members**

WI-FI POWERING INNOVATION SERIES: 08:30 PT; 11:30 ET; 15:30 GMT; 23:30 Singapore

Thursday June 3 rd	Thursday, June 10 th	Thursday, June 17 th	Thursday, June 24 th	Wednesday, June 30 th	Thursday, July 8 th
Wi-Fi Innovations Connecting Your World – Leadership Conference	Connecting the Wi-Fi Enabled Enterprise	Wireless Innovation, Operation & Customer experience – Where next for operators?	Wi-Fi Innovation For Hospitality	Connected Cities get Smarter with Wi-Fi in the 5G Era	Carrier Grade Wi-Fi delivering the future for the Smart Connected Home



Thank you to our Sponsors





Welcome & Background of the Connected Communities Forum

TIAGO RODRIGUES

CEO

Wireless Broadband Alliance





Connected Cities Get Smarter with Wi-Fi in the 5G Era



Tiago Rodrigues
Wireless Broadband Alliance



Jamie Cudden
City of Dublin



Morné Erasmus
CommScope



Michael J. Zeto III
Boingo Wireless



Reza Jafari
E-Development International



Simon Vaughan
GlobalReach Technology



Clinton Vince
Dentons



Morgan O'Brien
Anterix



Blaz Vavpetic
Single Digits



Steve Namaseevayum
Wireless Broadband Alliance



Alphonso Jenkins
Former Deputy Commissioner of Telecoms for New York City



Robert Sokota
ZenFi Networks

Connected Cities Get Smarter with Wi-Fi in the 5G Era

TODAY'S AGENDA	
08:30am (Pacific time)	Welcome & Background of Connected Communities Forum Tiago Rodrigues, CEO, Wireless Broadband Alliance
08:45am (Pacific time)	Smart City Dublin: Drivers for change Jamie Cudden, Smart City Program Manager, City of Dublin
08:55am (Pacific time)	Public Wi-Fi needs more than just a simple boost to support the inequities in the new-era digital divide Morné Erasmus, Director, Smart Spaces, CommScope
09:10am (Pacific time)	Innovation Through Technology: Powering Smart Communities for the Future Michael J. Zeto III, Senior Vice President, Global Strategy and Emerging Businesses, Boingo Wireless.
09:25am (Pacific time)	Panel Discussion Moderator: Reza Jafari, Dublin City, CommScope, Boingo Wireless & Simon Vaughan, Chief Commercial Officer, GlobalReach Technology.
09:45am (Pacific time)	Private Wireless Networks for Utilities Clinton Vince, U.S. Energy Practice and Co-Chair of Global Energy Sector, Dentons; Morgan O'Brien, Executive Chairman, Anterix
10:00am (GMT)	Partnering to Create Value in a SmartCity Ecosystem Blaz Vavpetic, CTO Single Digits
10:15am (Pacific time)	Future of WBA OpenRoaming & Convergence Steve Namaseevayum, Director, Membership & Industry Alliances
10:25am (Pacific time)	Panel Discussion Moderator Steve Namaseevayum, Director, Membership & Industry Alliances; Blaz Vavpetic, CTO, Single Digits; Alphonso Jenkins, formerly Deputy Commissioner for Telecommunications New York City; Robert Sokota, Chief Administrative Officer, ZenFi Networks.
10:45am (Pacific time)	Close Steve Namaseevayum, Director, Membership and Industry Alliances, Wireless Broadband Alliance



Smart City Dublin: Drivers for Change

JAMIE CUDDEN

Smart City Lead
Dublin City Council



@jcudden

www.smartdublin.ie

Smart City Dublin: Drivers for change

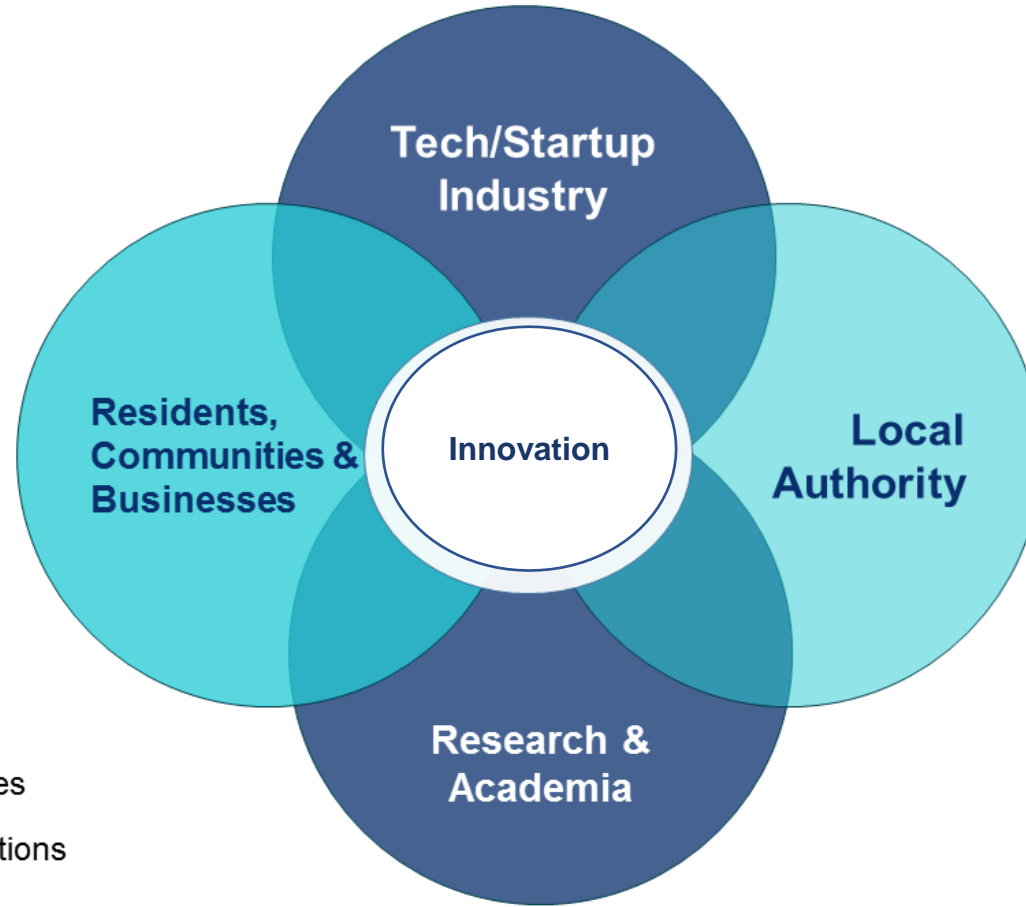


Jamie Cudden – Smart City Lead, Dublin City Council





Comhairle Cathrach
Bhaile Átha Cliath
Dublin City Council

Our goal is to help future-proof Dublin by trialling and scaling innovative solutions to a wide range of local challenges



- Drones
- 5G
- IOT
- Digital Twins
- EDGE computing
- Future Mobility
- AI
- Emerging Tech

 Ideas/Challenges
 Innovation/Solutions

Take a challenge based approach

Challenges

Master Use Case List



Multi Year Workplan

2 Year Quarterly Master Workplan

DCC Project 1						
Exable Project 1						
DCC Project2						

Theme
Movement & Flows
Environmental
Extreme Weather
Sustainable Mobility
Physical Infrastructure & Assets
Energy
Vibrant Economy
Connectivity & Networks
Safety/Security
Citizen Engagement / Connected Citizen
Social

-
-
-
-
-
-
-
-
-
-
-

Sub-Categories
Congestion, traffic, origin/destination, deliveries
Water quality, air quality, noise pollution, waste
Flooding, snowfall etc
Walking, cycling, public transport, shared mobility, EV, MaaS
Quality of road surface, accessibility of sidewalk, mapping of assets
Metering, Smart grid, renewables, SECs
Tourism/Events - orientation, 3Arena, CCD, CHQ, Aviva, Dublin Port Cruise
5G, 4G, LPWAN, IoT Networks, coverage gaps, network planning
Crime, anti-social behaviour, perception of safety
Citizen sensing, engagement, crowd sourcing, apps
Skills, housing, unemployment



**SMART
DUBLIN**

Collaboration model



Research Centres:



Higher Education:



State Agencies:



Delivering real projects – accelerated deployments

- Cities are big and messy and difficult to drive change
- Comfort in starting small
- Getting buy in
- Get stuff done
- Make it real.....
- Dublin is faster than anywhere else...

► DUBLIN AS A TESTBED

“ WE ARE BIG ENOUGH YET SMALL ENOUGH TO BE THE IDEAL LOCATION TO PILOT NEW CITY SERVICES & SOLUTIONS



Smart Dublin Districts



City Testbed

Telecoms/Connectivity
IoT



Business District

Mobility
Research



Campus Testbed

Mobility
3D / Digital Twins



Regional Town

Community
Public Realm



City District

Health
Wellbeing



TOP 50 -
**SMART CITY
GOVERNMENTS**

[VIEW 2020/2021 STUDY](#)

BLOG

Top 50 Smart City Governments: Dublin 26th in World Smart City Ranking



Dublin's smart districts helped to accelerate its smart city development by ensuring that these solutions are feasible and attend to the priorities of the area they are serving.

“Dublin has developed a reputation for its smart city programme and this has been recognised in the latest Eden Strategy Institute’s Smart City rankings. Dublin ranked 26th in the world, up 15 places on the previous year. Its highest scores were achieved for ‘Leadership’ and ‘Innovation Ecosystem’, with particular attention paid to the establishment of smart districts in the Dublin region to testbed innovations & partnerships“



THE WORLD'S MOST CONNECTED
BUSINESS & LIVING DISTRICT



NB-IOT
0

DARK FIBER


'r/ sigfox





Home / Citizen Engagement

Dublin's Docklands becomes a centre for innovation

17th April 2019 [Jonathan Andrews](#)



TOP 5 FDI STRATEGY

RANK	CITY	COUNTRY
1	Smart Docklands	Ireland
2	Vilnius	Lithuania
3	Hamburg	Germany
4	Bogotá	Colombia
5	Stratford	Canada





Smart Office Optimisation



5G Mobile Indoor



Smart Bike Stands



Smart Bench



3D AR VR Model



Cyclist Prioritisation at Junctions



5G Mobile Outdoor



Smart Bins



Smart Bike Light



Smart Gully Monitoring



Flood Prediction



Air Quality Sensing

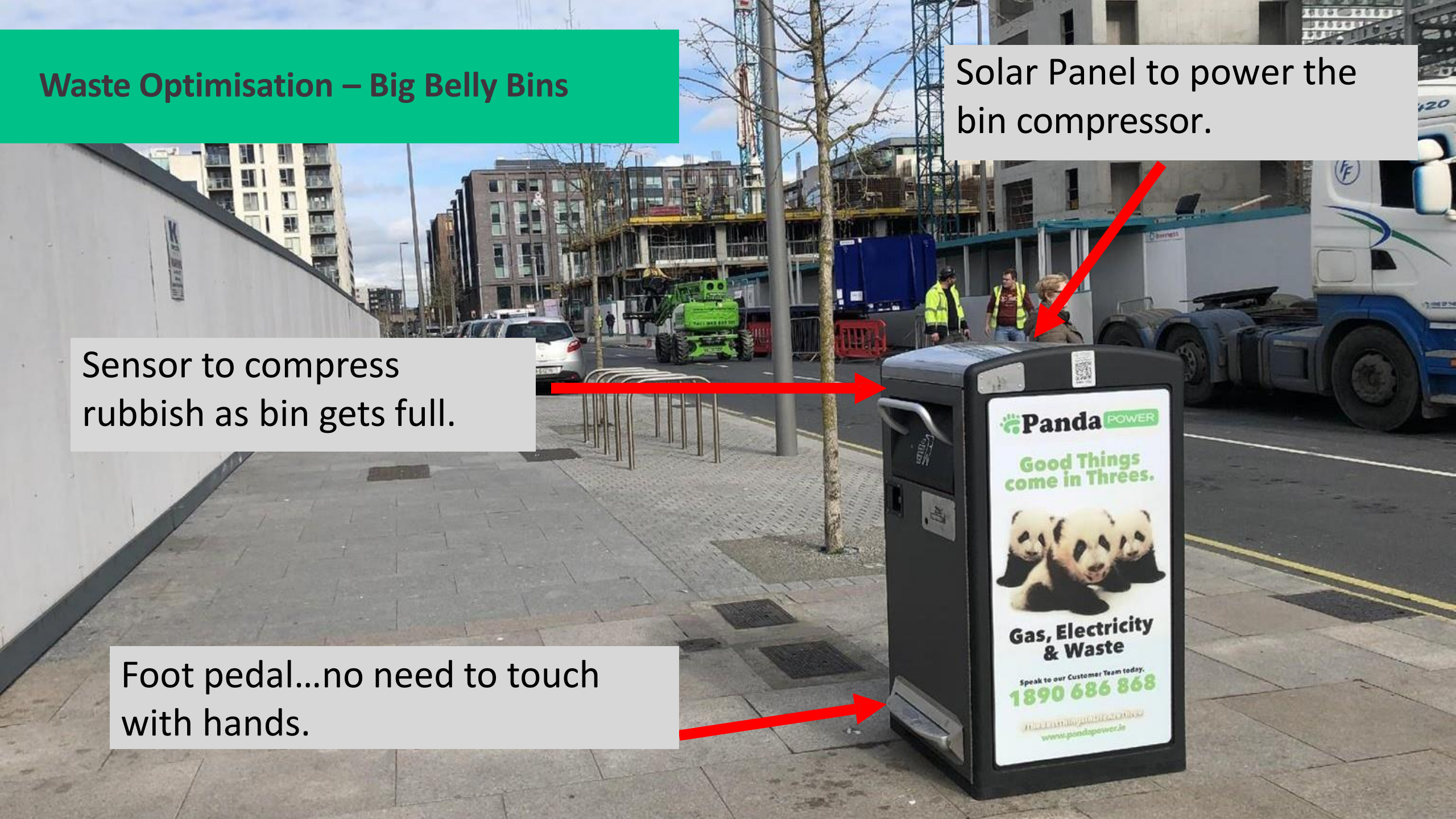


Waste Optimisation – Big Belly Bins

Solar Panel to power the bin compressor.

Sensor to compress rubbish as bin gets full.

Foot pedal...no need to touch with hands.



Print Export ...

Map

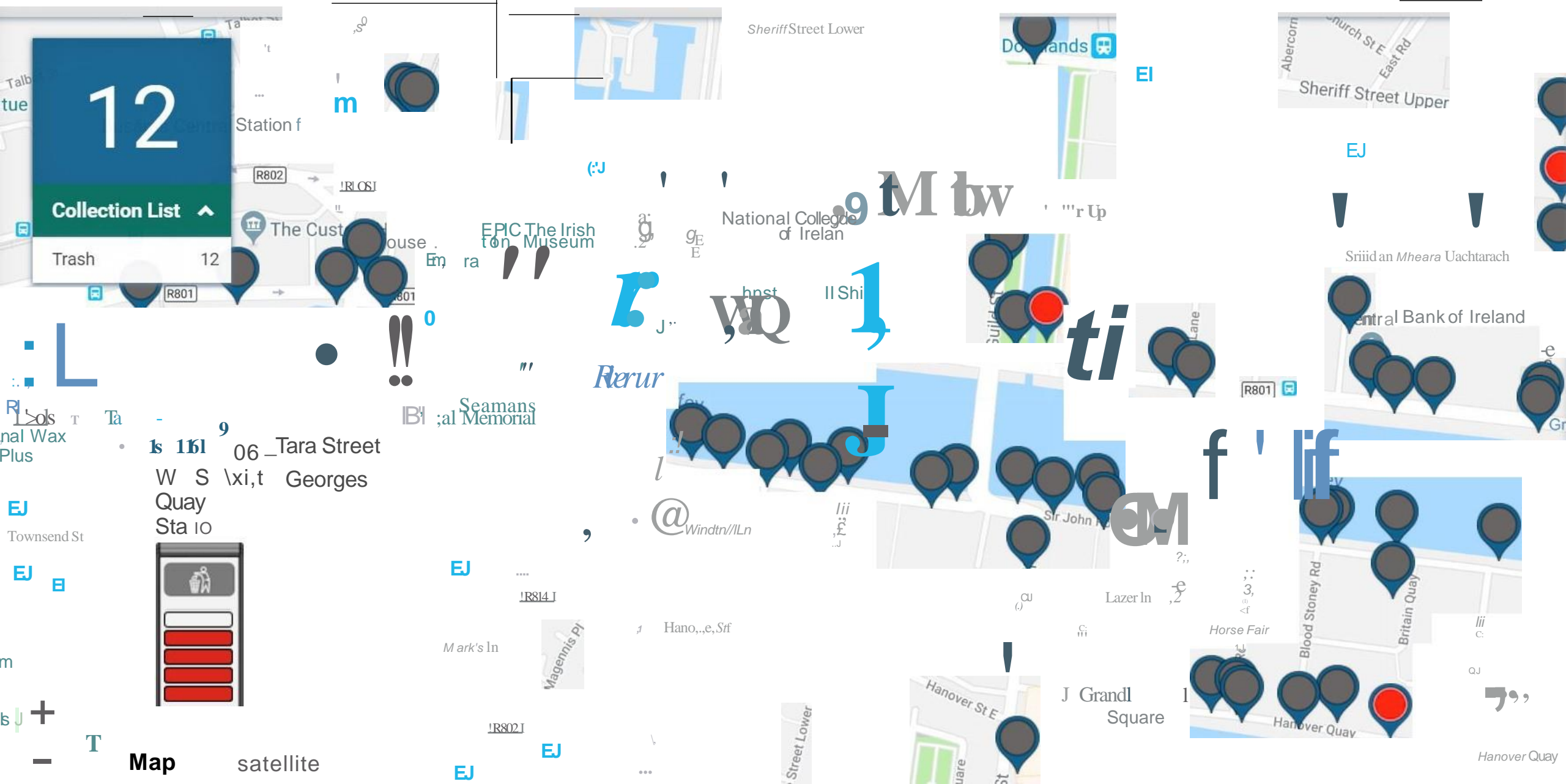
List

Panel

12

Collection List

- Trash 12



Map satellite

Hanover Quay

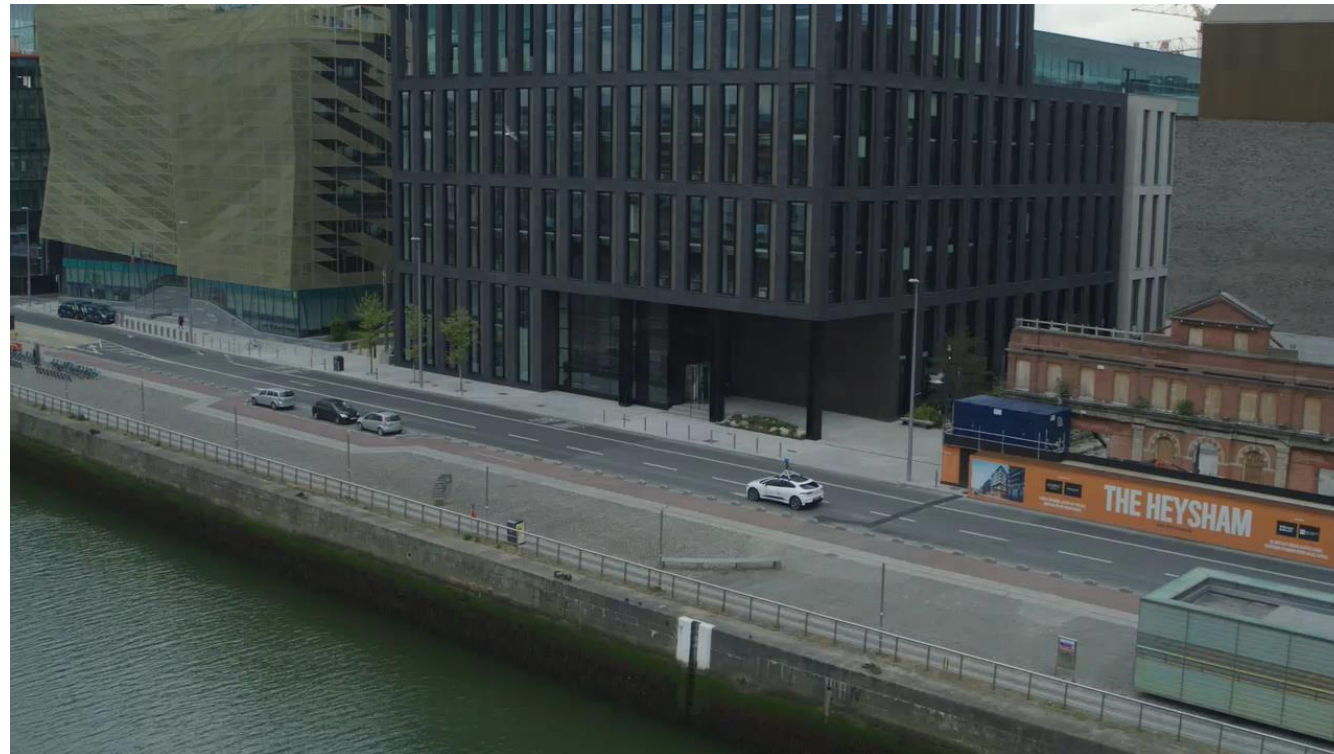
A LIFELINE...
TALK TO US
087 2 60 90 90

abuse

PLEASE
do not vandalise
this lifesaving
device. It may be
needed to save
YOUR life
someday.



Google Airview – First streetview EV-car



All of us can go on our smartphone and get the weather. But what if you could scroll down and see what the air quality is on the street where you're walking?



Turn on HEIGHT = 1



"As the virtual and physical worlds converge, the metaverse – comprised of digital twins, simulated environments, and mixed reality – is emerging as a first-class platform, and traction is being seen across the public and private sectors. Bentley Systems is building a digital twin of the city of Dublin to reimagine urban planning using Microsoft Azure Digital Twins and Azure IoT (Internet of Things)".

Microsoft CEO - Satya Nadella highlighting Dublin's collaboration on a Q1 Microsoft earnings call – May 2021

HIGHT STUDY X

- HEIGHT = 1.5
- HEIGHT = 1.25
- HEIGHT = 1

NEW DEVELOPMENT

HIGHT STUDY

CITIZEN SUGGESTIONS

INFORMATION

CONTENT

ACADEMY OF THE NEAR FUTURE

A Smart City Tech Programme for students and upskillers.



Comhairle Cathrach
Bhaile Átha Cliath
Dublin City Council

CONNECT

SFI Research Centre for
Future Networks



Fondúireacht
Eolaíochta
Éireann **sfi**
Dá bhfuil romhainn



Tech For Good 
@TechForGood_

An [#education](#) programme in Dublin is teaching secondary school pupils and public sector workers the benefits of [#IoT](#) and [#smartcities](#). [#TechForGood](#) speaks to [@DubCityCouncil](#) and [@SmartDocklands](#) to find out more:



Dublin's academy of the future: teaching kids to smart city

techforgood.net

Home / ICT and Cities

Dublin to test 'neutral' 5G network

21st February 2019 [Jonathan Andrews](#)



Latest Issue

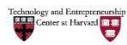


Home About Us Events Civic Innovation Masterclass Become A Member
Articles Contact Us

5G CityView Innovation Accelerator – Dublin 2019

October 2019 Dublin, Ireland

HOSTED BY:



IN COLLABORATION:



PRINCIPAL SPONSORS:



PRESENTING SPONSORS:



Dublin's docklands could be turned into a playground for testing 5G technology

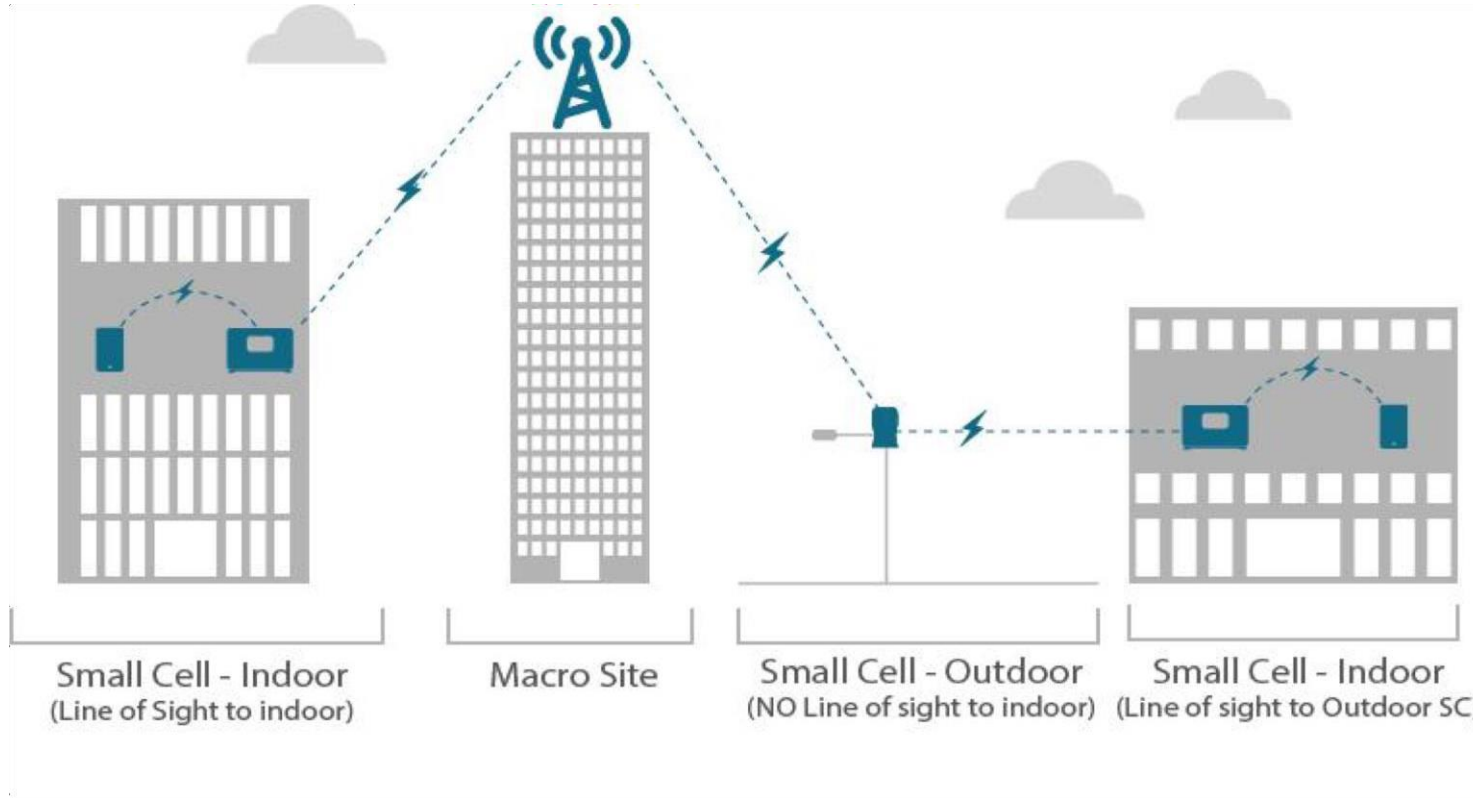
The city council hopes a 'small cells' network will be available for use by native and international firms.



BY **ZUZIA WHELAN** REPORTER, FORA
FEBRUARY 18TH 2019 | 3 MIN READ

Smart Docklands - Small Cells

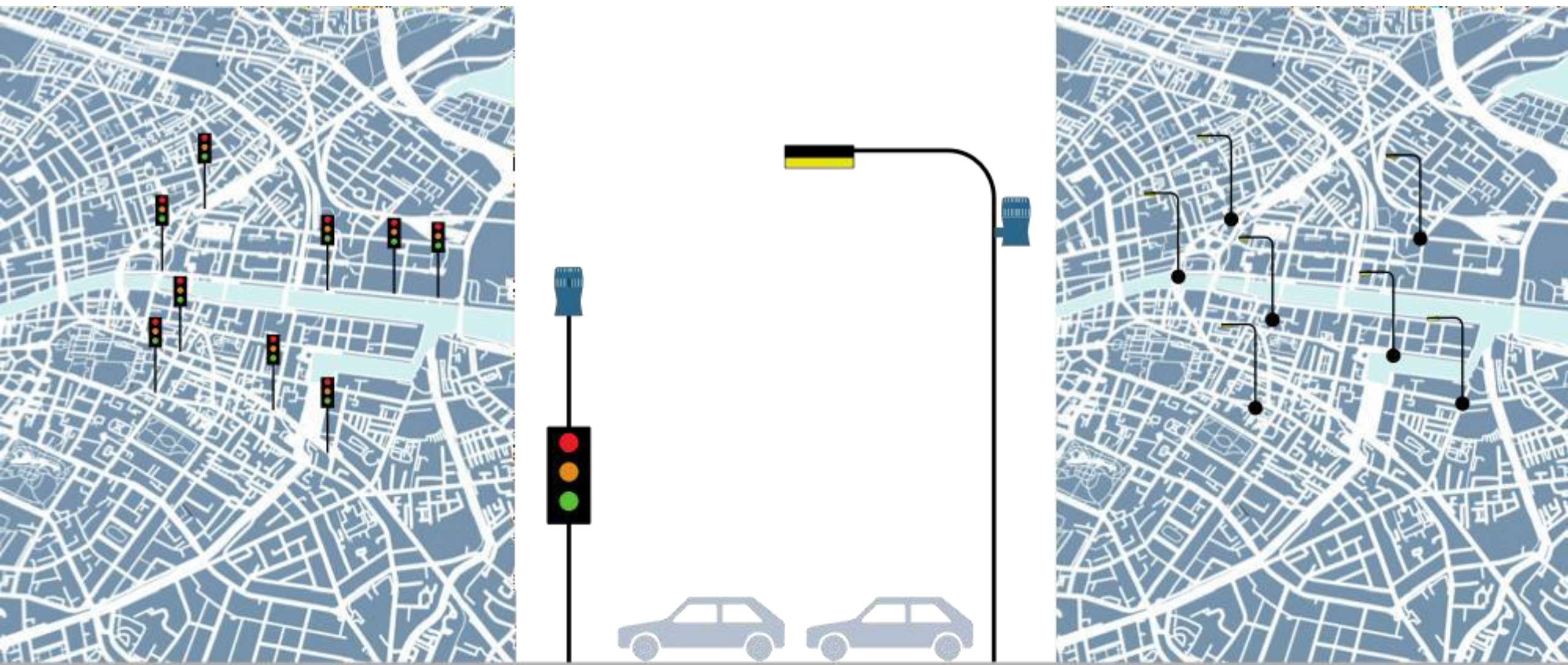
DENSE AIR
Mobile Networks Enhanced and Extended



 Comhairle Cathrach
Bhaile Átha Cliath
Dublin City Council

CONNECT
Networks of the Future

Neutral Host – Small Cell – 5G Trial Network



Outdoor Densification...

Utilising DCC Street assets, providing a pervasive layer, enabling smart city services



5G and Future Connectivity

An Emerging Framework for Irish Cities and Towns

DISCUSSION DOCUMENT



TIP SOLUTION GROUPS

Addressing connectivity challenges in every environment.

OPEN AUTOMATION

NETWORK AS A SERVICE

MOBILE DATA OFFLOAD



CONNECTED CITY INFRASTRUCTURE

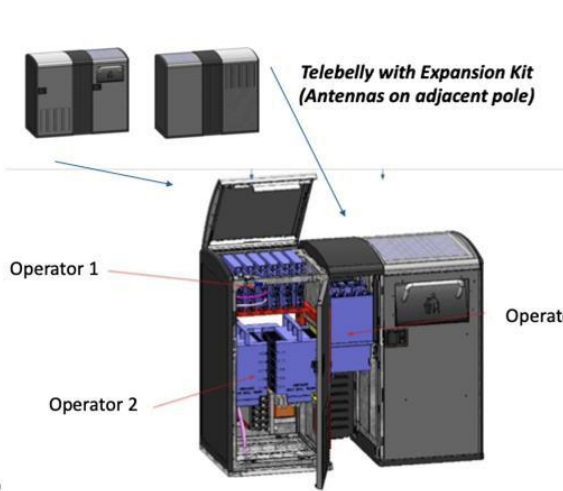
STAKEHOLDERS

Stakeholder Map



Outlined below are the 6 assets:

1. 'Smart' Pole - Ligman
2. 'Smart' Pole - Schröder
3. BigBelly - Cabinet, pole and antenna
4. BigBelly - As a cabinet
5. Standard Pole - Retrofit equipment to existing asset
6. Standard Pole - Retrofit to new standard pole





Telebelly Multi Carrier Solution

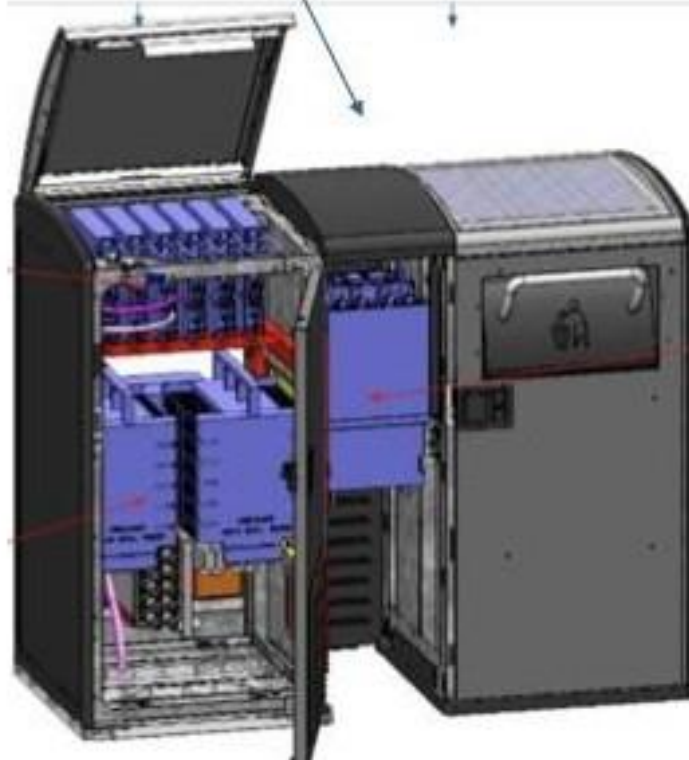
Use Case Spotlight



*Telebelly with Expansion Kit
(Antennas on adjacent pole)*

Operator 1

Operator 2



Telebelly cabinet before radios

Operator 3



- Any fan modules installed
- Operator 1 shelf and bracketry
- Operator 1 shelf and bracketry
- Combiner/ SARO plate installed



← Sráid Uí Chonail
29 Cannon Street
← Ard-Oifig an Phoist
General Post Office
← Sráid Anraí
Henry Street
← 14 Sraid Mharaíona
14 Marryat Street

cct | College Dublin

WESTIN

MORELANDS GRILL

MORELANDS GRILL





WiFi4EU Locations

In 2019, members of the public were invited to suggest locations where the free public WiFi should be installed. **Dublin City Council** received over 50 applications to access the **WiFi4EU** supports and are working with **Virgin Media** to install over 30 WiFi hotspots over the coming weeks. Some of the locations involved are shown in map below.



FREE WiFi4U

PUBLIC CONSULTATION

Have Your Say, Bring FREE Wifi to Your Community

Tell us where by
visiting
<http://bit.ly/DCCwifi4U>
, scanning QR code
or post proposed
location to Smart
City, 3 Palace Street,
D02 T277



Closing Date
12th June

#DCCwifi4U
smartcity@dublincity.ie



An Roinn Forbartha
Tuaithe agus Pobail
Department of Rural and
Community Development



Comhairle Cathrach
Bhaile Átha Cliath
Dublin City Council





- “The Wifi4EU programme will support connectivity in areas of the city that need it most with a particular emphasis on strengthening community engagement and supporting wider digital innovation initiatives”



Artane Coolock Family
Resource Centre



Sean O'Casey Community Centre



Ballymun Axis Centre



YMCA Aungier Street.



Basketball Club



Football Club



Youth Service



Addiction Support Service



Youth Service



Elderly People Support
Group



World WiFi Day

Keep our city, communities and families connected.



Riádas na hÉireann
Government of Ireland



smartdublin.ie

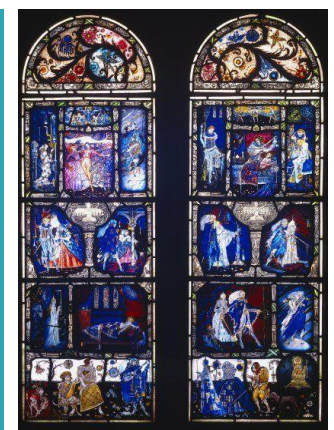


World Wi-Fi Day

Ireland AM

This morning we're joined by three women who are doing incredible work for three different charities across Dublin and who are benefitting from free Virgin Wi-Fi

Connected Gallery – Hugh Lane Gallery



NEWS

SPORT

BUSINESS

OPINION

LIFE & STYLE

CULTURE

Environment > Climate Change | Heritage & Habitat

Dublin city centre pedestrian scheme to start this month

Areas around Grafton Street will become car-free to allow outdoor dining

Thu, May 6, 2021, 11:50 | Updated: Thu, May 6, 2021, 11:52

Olivia Kelly Dublin Editor



Smart Dublin Project Board *

Personal & Public

Show Menu

Smart Dublin & Smart



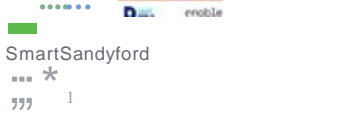
Smart Dublin
1



Smart Docklands
1



Smart Sandyford
1



Smart DCU
1

Smart Environment



Google Environmental Insights Explorer: Data-driven Decision Making
1



Gully Monitoring: Co-creating Solutions to Manage Flood Risks
1



Flooding Innovation Project: Real Time Data for the Dublin Region
1



Smart People



The Dublin Beat: Understanding Citizen Sentiment
1



Unheard Voices: Reaching Previously Unheard Communities
1



Grant Applications: Digital First, Always Accessible
1

Smart Mobility



Smart Mobility Hub: Sustainable Mobility Innovation
2



Free Now Match Pilot: Optimising Taxi Usage
1



Milbast Delivery: Urban Deliveries Innovating
1



Smart Bike Lights: Crowdsourcing
1

Smart Economy



MyOorStep: Bringing Vital Information to Citizens
1



Dublin Economic Monitor: Dublin's Performance
1

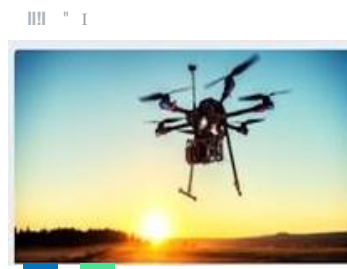


Smart Bins: Optimising and Innovating Waste Management
1

Smart Government



Dublin's Open Data Store
1



Drones: Managing our City's Skies
1



Docklands 30 Virtual Model: Future Planning & Citizen Engagement
1



Future Networks: IoT for Asset Management
1

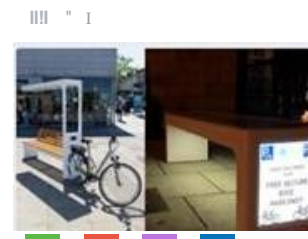
Smart Living



Connected Life Buoys: Reducing Theft and Saving Lives
1



Route4U: Just 30 Seconds and Smart Phone Can Improve Accessibility
1



Smart Street Furniture: Reimagining our Public Realm
1



WiFi4EU: Connecting Communities
1





Public Wi-Fi Needs More than Just a Simple Boost to Support the Inequities in the New-Era Digital Divide

MORNÉ ERASMUS

Director, Smart Spaces

CommScope

COMMScope®

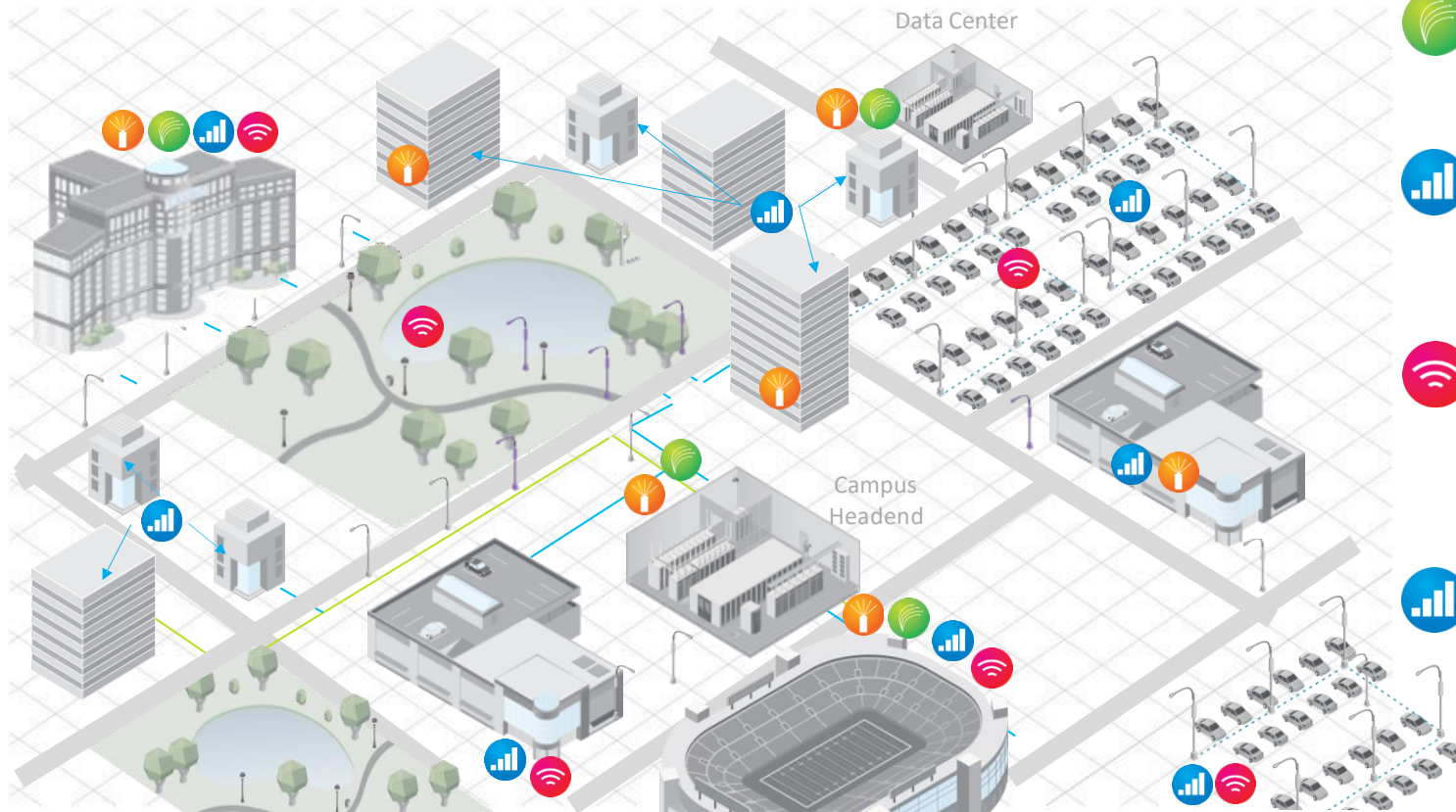


30 June 2021

Public Wi-Fi needs more than just a simple boost to support the inequities in the new-era digital divide

Presented by: Morne Erasmus
Director Smart Spaces

CommScope is a global infrastructure provider



Wireline Networks



Copper



Fiber

Wireless Networks



DAS

Small Cell

CBRS



Wi-Fi

IOT

Concealment solutions



Smart Poles

- **Services**
- **Eco Partners**



CONNECTIVITY IS EVERYWHERE.

IN AN INTERNET MINUTE



4.1 MILLION
GOOGLE SEARCHES



764,000 HOURS
NETFLIX VIDEO WATCHED



\$1,1MILLION USD
SPEND ONLINE



1,6 MILLION
SWIPES



**ENABLED BY
RAPIDLY EVOLVING NETWORKS.**

The Digital Shift

Driving Smart Connections



Security
Cameras



Public
Wi-Fi



Cellular
Coverage



Private
Networks



IoT



Mobile Edge
Computing



EV
Charging



Digital
Kiosk



Smart
Poles



Tough times are a catalyst for change

Our Customers' 20/21 Plans Did Not Materialize

Workers & Workplaces



Learning & Teaching



Healthcare Systems



Travel & Hospitality



Supply Chains



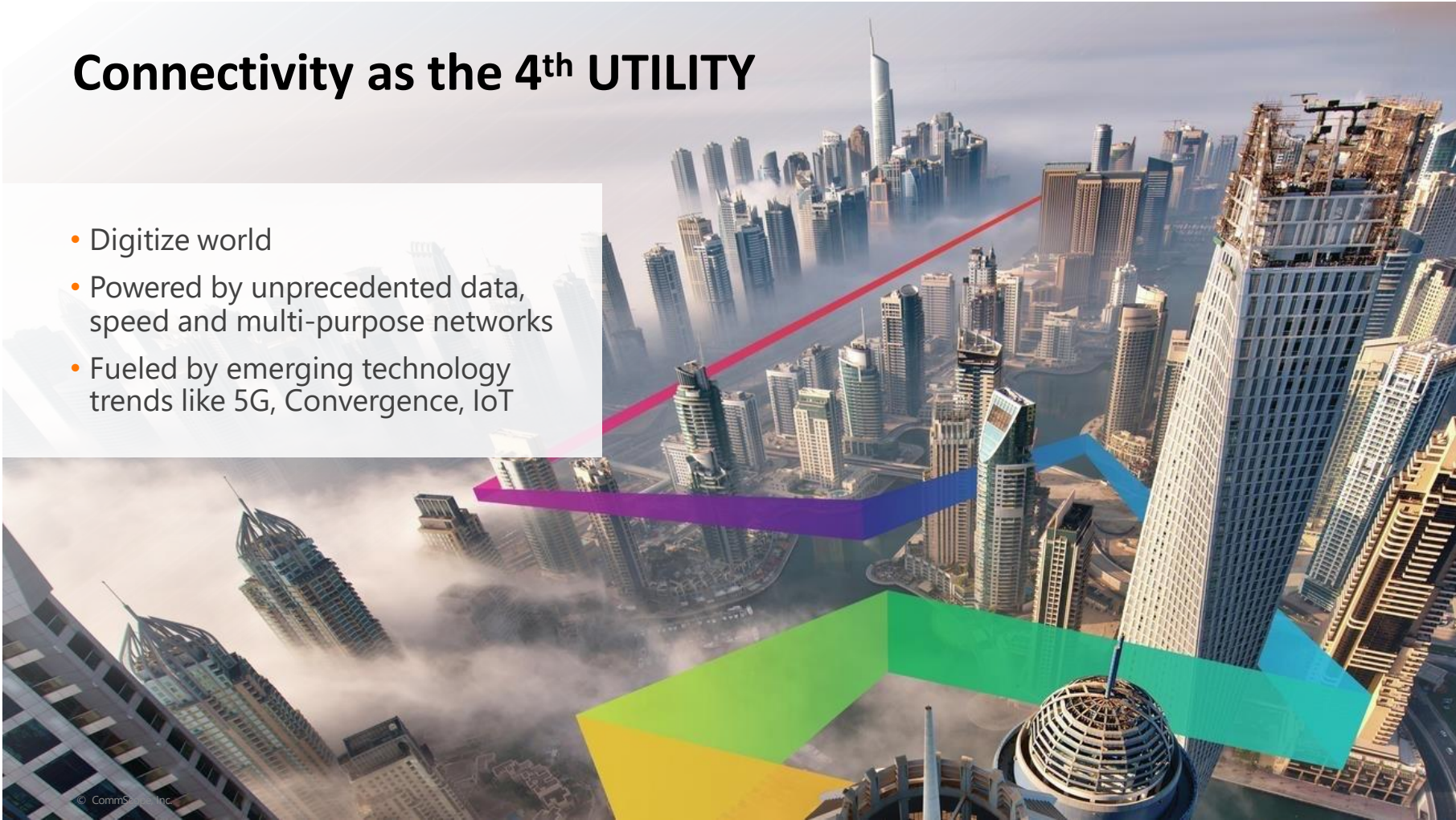
Daily Interactions



Our Communities & Industries Are Looking For Creative Ways To Cope & Emerge Stronger

Connectivity as the 4th UTILITY

- Digitize world
- Powered by unprecedented data, speed and multi-purpose networks
- Fueled by emerging technology trends like 5G, Convergence, IoT



Key challenges with public Wi-Fi deployments

- Backhaul & Power
- Site Location & Concealment
- Funding
- Convergence - Build smarter not just more networks!

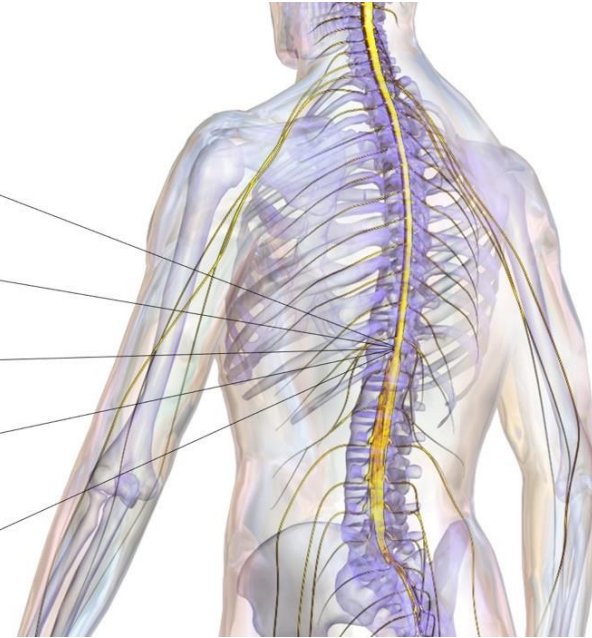


Backhaul

- Bandwidth consumption growing exponentially
- More spectrum & wireless edge devices = more backhaul capacity
- Look for smart ways to cope with projects like EV charging

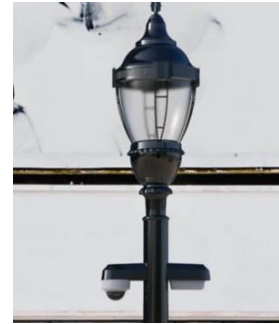
#smartconnectivity

- Copper Cable Networks
- Fiber Networks
- Licensed Wireless
- Unlicensed Wireless
- Private Networks

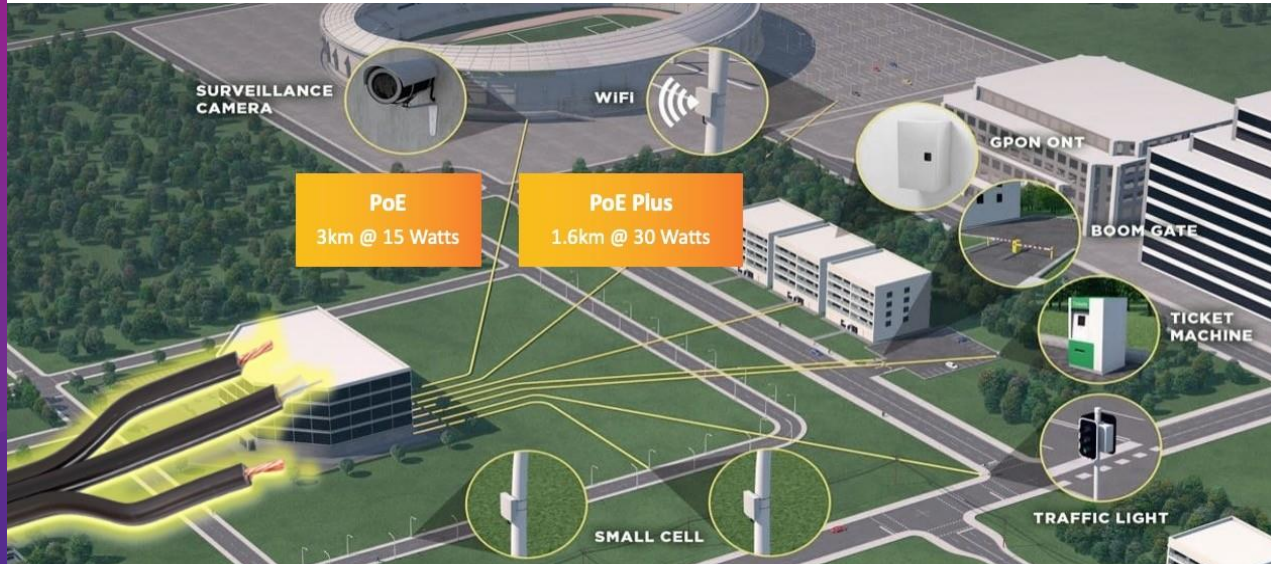


Power Supply

- Every edge device needs power
- More applications per edge device drive critical hardware & infrastructure
- Reliability, concealment and always ON culture



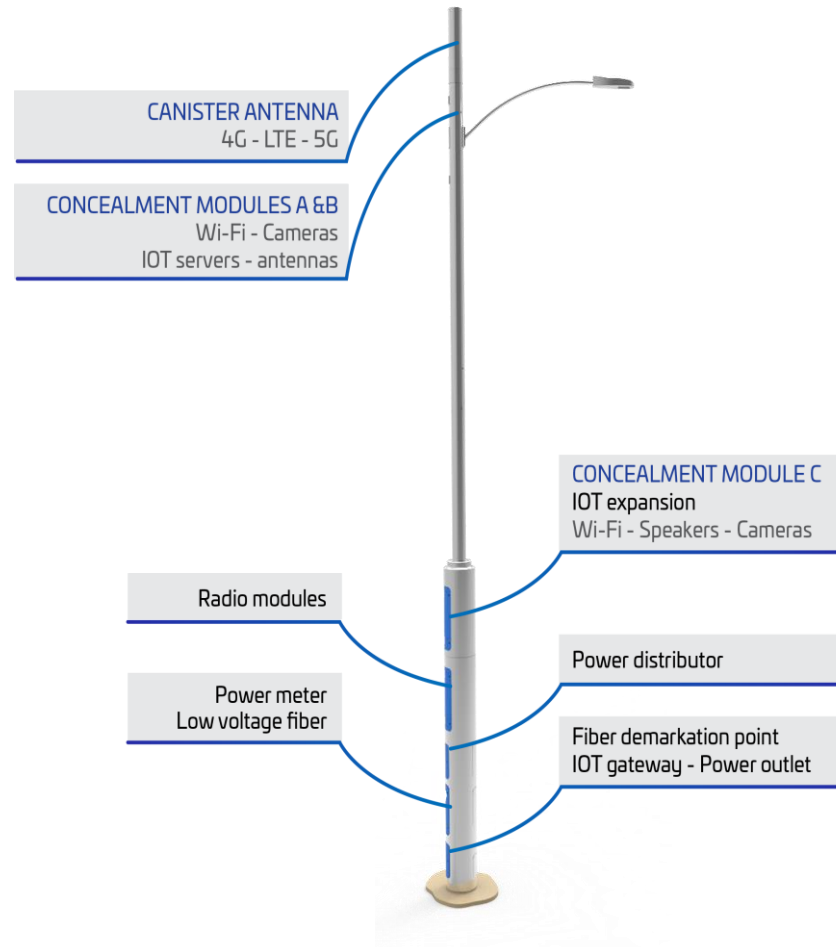
Shift to critical edge devices requiring backup power



Powered fiber cable solutions

Site Location

- Where will we locate all these edge devices?
- Modular Smart Poles
- Street furniture



Funding

- Evaluate the ROI on Economic, Political and Social benefits
- Hard to monetize / self fund public Wi-Fi
- Federal money helped jumpstart projects and proof success
- Urban vs Rural challenges



US FEDERAL FUNDING ASSISTANCE: COVID Stimulus Funding Sources

Source	Total	IT Oppty
CARES Act	\$2.2T	\$26B
Consolidated Appropriations Act (H.R. 133)	\$900B	\$143B
American Rescue Plan	\$1.9T	\$639.1B



The Need is Great, State Budgets have been Decimated, Federal Funding is Critical



- Advertising to offset cost
- Wi-Fi as amenity to win advertising rights
- Asset for 5G deployment
- Shared infrastructure – IP Video & IoT

Convergence

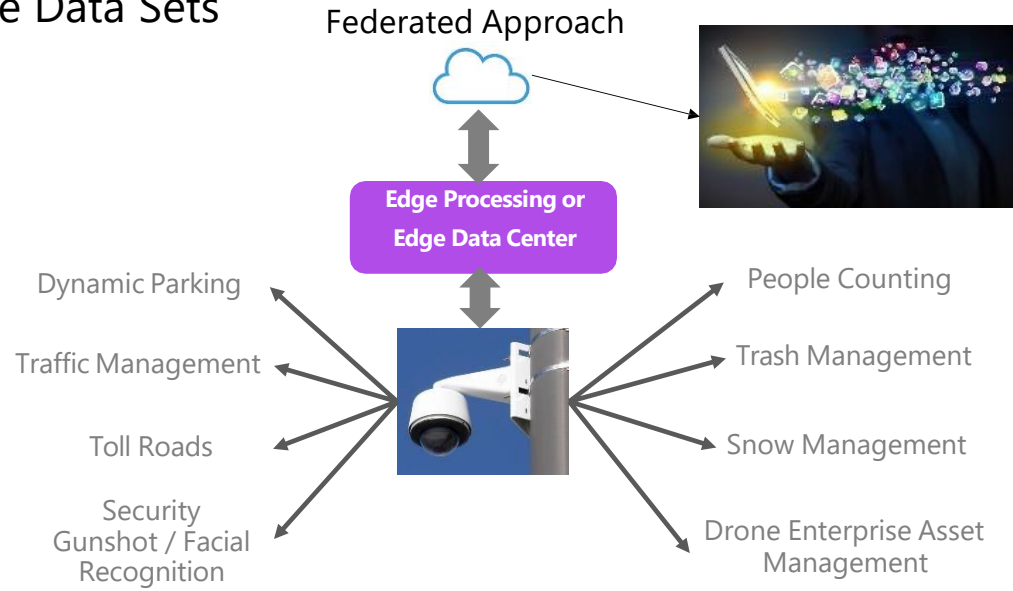
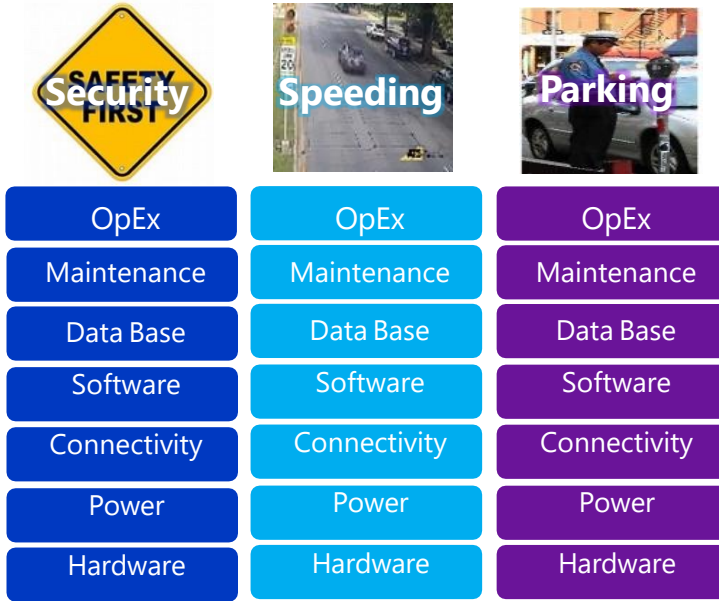
Breaking down the silos
between multiple:

- Owners
- Networks
- Services

Let's build a smarter network!



Owners - Silo Applications & Disparate Data Sets

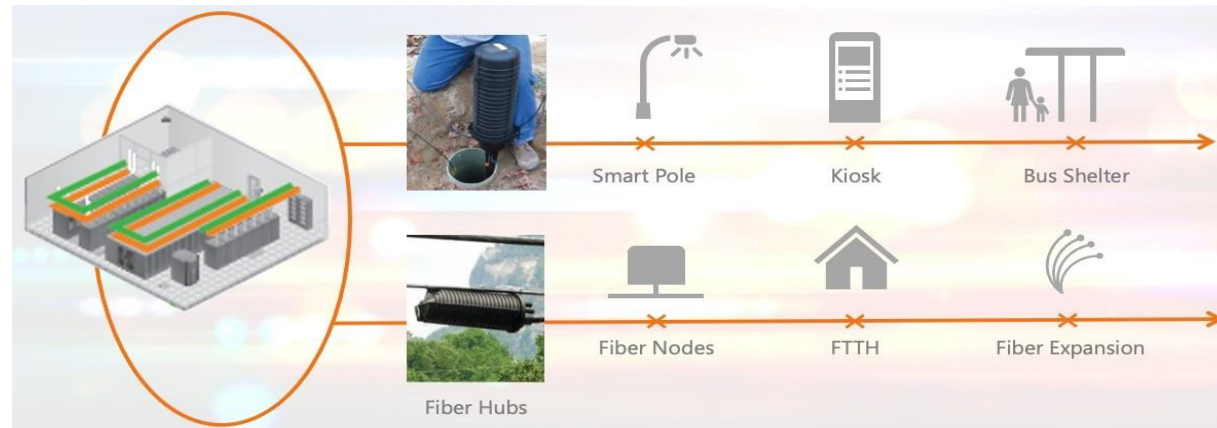
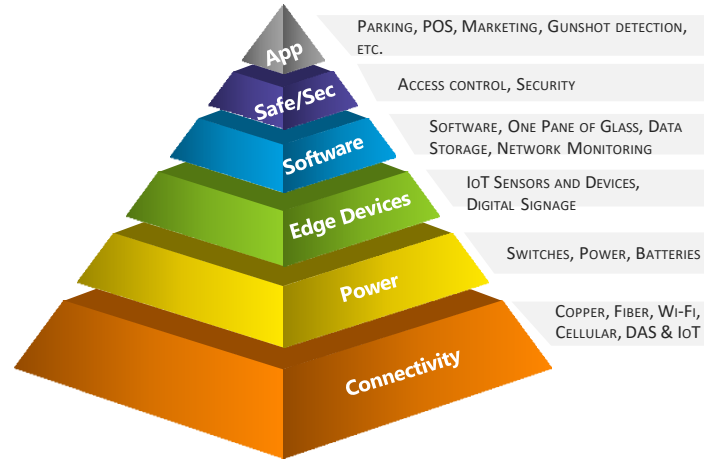


Smart Cities Creates Economic Opportunities

Open collaboration is more necessary and available than ever before

Network Convergence

- Start with connectivity as the foundation
- Fiber to the X network
- Wi-Fi & IoT converged network



Converged Services

Challenge: Traffic & Parking in the City



Reduce traffic & pollution



- Emission limits are exceeded
- 20 min looking for parking
- 30% of traffic caused by search

Increase lost revenue



- Up to 80% are parking illegally
- Spaces aren't being monetized
- Space management is costly

Reduce Maintenance



Improve OPEX & Monitoring



Revenue generation



Traffic Route and Parking Optimization

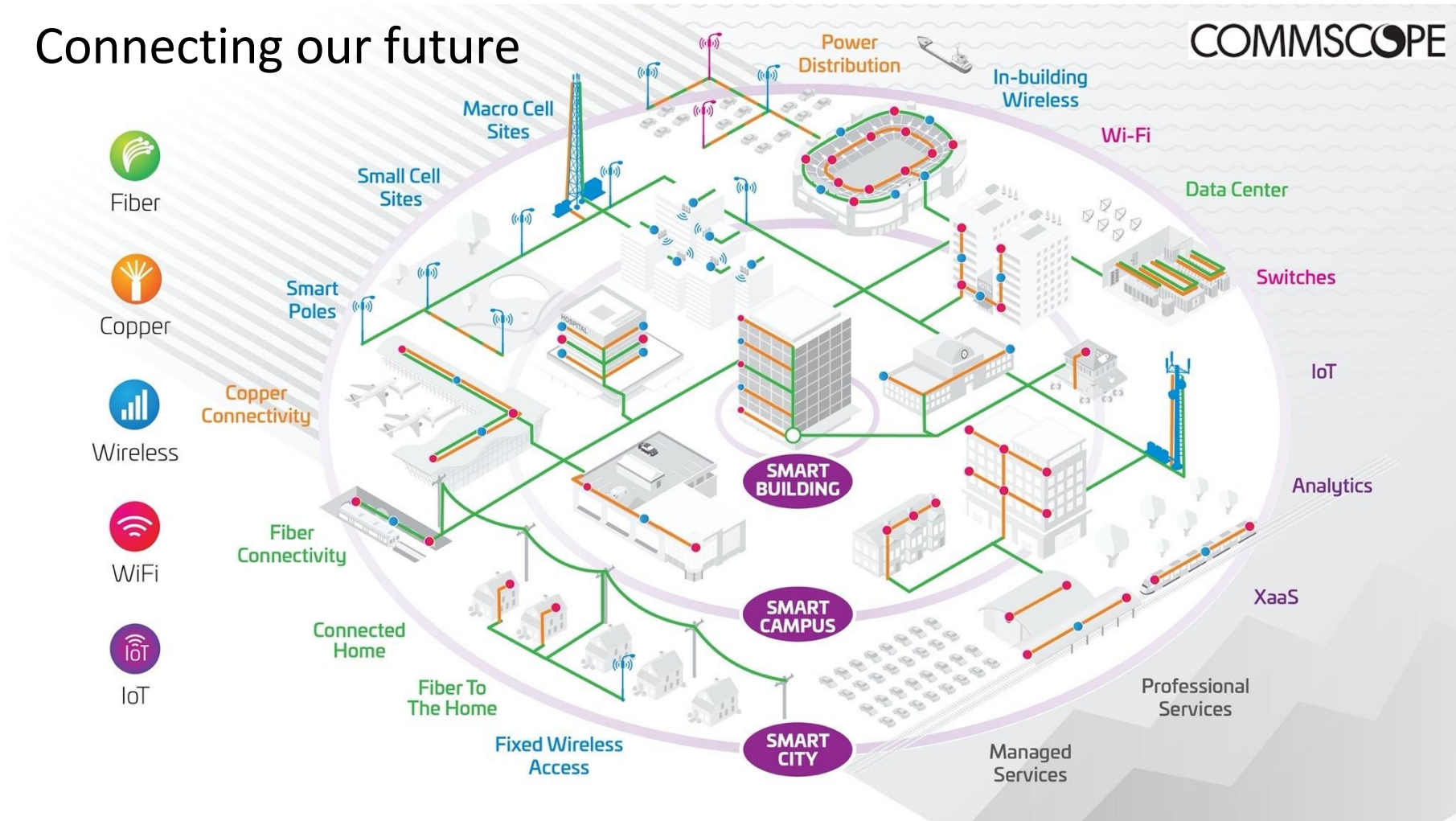
Routing

Parking

Dynamic Price Parking

Connecting our future

COMMSCOPE





Innovation Through Technology: Powering Smart Communities for the Future

MICHAEL J. ZETO III

Senior Vice President, Global Strategy and Emerging Businesses

Boingo Wireless





INNOVATION THROUGH TECHNOLOGY
POWERING SMART
COMMUNITIES FOR THE FUTURE

WBA WIRELESS GLOBAL CONGRESS | June 30, 2021

Michael J. Zeto III

Senior Vice President, Global Strategy and Emerging Businesses, Boingo

WORLD CLASS WIRELESS

FOR THE

**WORLD'S PREMIER
ENTERPRISES**

Boingo delivers
unparalleled
wireless solutions
at iconic venues
serving more than

▶ **1** ◀
**BILLION
CONSUMERS
ANNUALLY**

A Trusted Partner of Iconic Venues

Leading venues nationwide partner with Boingo for the best in wireless innovation.



World Trade Center
New York, NY



Los Angeles International Airport
Los Angeles, CA



John F. Kennedy International Airport
New York, NY



State Farm Arena
Atlanta, GA



Soldier Field
Chicago, IL



Vivint Smart Home Arena
Salt Lake City, UT



John Wayne Airport
Santa Ana, CA



Salesforce Transit Center
San Francisco, CA



Hollywood Bowl
Los Angeles, CA



Live Nation
Various Locations

A hand holding a smartphone displaying a city skyline at sunset, with the title "The Vision" overlaid. The background is a blurred cityscape at night with bokeh lights.

The Vision


boingo

Connectivity Matters

Today connectivity is a necessity



30
million

Americans cannot reap the benefits of the digital age



\$172
billion

The forecasted value of the global telemedicine market by 2026



70%

Of the global population is expected to live in cities by 2050



60%

Of airlines are focused on investing in biometric self-boarding gates

Powering the Smart Communities

Powering intelligent communities of the future requires identifying the right technology for the right use case.

PLTE

Private LTE



Wi-Fi



Macro



DAS



Passpoint



HEALTHCARE

- Remote diagnosis and treatment
- Home healthcare for disabled populations
- Support aging in place
- Secure data management

COLLEGE CAMPUS

- Touchless access points
- Wi-Fi connectivity
- Remote learning
- Campus safety
- Automated maintenance monitoring

PUBLIC WORKS

- Environmental monitoring
- Smart metering
- Water and waste management
- Weather monitoring stations

TRANSIT HUBS

- Touchless passenger journey
- Advanced security cameras
- Increased connectivity speeds
- Seamless ease-of-use for travelers

RESIDENTIAL

- Distance and remote learning
- Closing the digital divide
- Smart home solutions
- Energy-saving initiatives

OFFICE BUILDING

- Touchless experience
- Smart building solutions
- BYOD
- Predictive maintenance
- Energy monitoring and savings

PUBLIC SAFETY

- Real-time emergence response
- Drone patrol
- Intelligent cameras
- Traffic management
- Digital signage

OUTDOOR SPACES

- Smart outdoor lights
- Detect overcrowding
- Mobile Wi-Fi hotspots
- Food trucks
- Tenant services

STADIUM

- Touchless experience
- Mobile apps
- Wagers/betting
- In-seat ordering
- AR/VR
- Queueing
- Rideshare

Realizing The Vision



How Do We Get There?

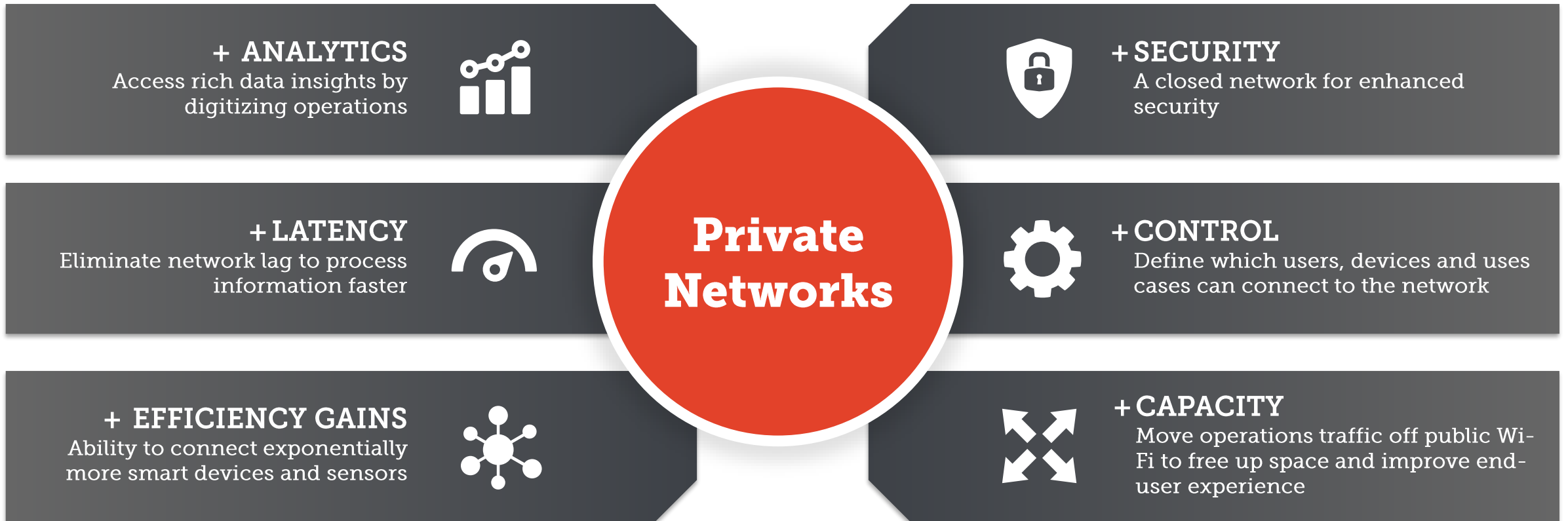
Connecting from the **inside, out** with advanced network technologies.



Wireless Solutions

Private Networks Spotlight

A private wireless network provides dedicated, secure bandwidth to transform operations.



A Safe Return to Public Transit

THE MOBILITY ISSUE



24%

Of IBM survey respondents said they would no longer use taxis



1 in 5

Of IBM survey respondents said they would stop using public transportation all together

THE CONNECTED SOLUTION



TOUCHLESS JOURNEY

- Mobile tickets and fare payment
- Pre-check kiosks
- Contactless concessions
- Social distance monitoring



DATA TRANSPARENCY

- Capacity monitoring
- Digital passenger communication
- Real-time reporting of ridership numbers



ENHANCED SAFETY

- 4K video surveillance
- Air purification systems
- Robotic cleaning devices
- Touchless temperature checks

Final Thoughts

Start with a converged technology model that can enable today's technologies and adapt for future innovations



**Create Safer,
Healthier, Intelligent
Environments**



**Address the Digital
Divide**



**Make Operations
More Efficient and
More Sustainable**



THANK YOU

Michael J. Zeto III
mzeto@boingo.com





Panel Discussion



Reza Jafari

E-Development
International



Jamie Cudden

Dublin City Council



Morné Erasmus

CommScope



Michael J. Zeto III

Boingo Wireless



Simon Vaughan

GlobalReach Technology



Private Wireless Networks For Utilities

CLINTON VINCE

Chair, U.S. Energy Practice &
Co-Chair of Global Energy Sector, Dentons



MORGAN O'BRIEN

Executive Chairman
Anterix





Collaboration in SmartCity Ecosystem

BLAZ VAVPETIC

Chief Technology Officer

Single Digits

SINGLE **1** DIGITS

Collaboration in SmartCity Ecosystem

WBA Wireless Global Congress

30th June 2021

Blaz Vavpetic, Chief Technology Officer

blaz@singledigits.com

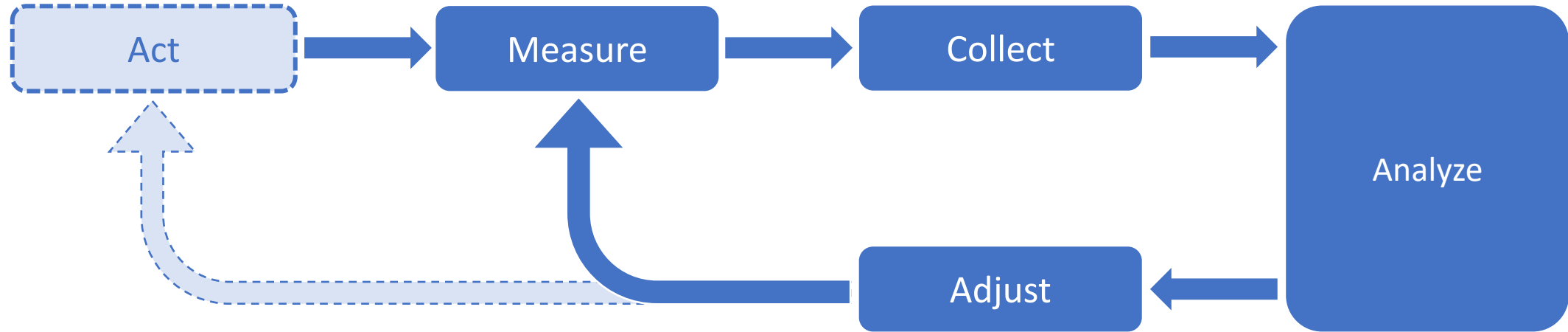
— What Makes a City “Smart”?

- + Coordinated operations between ecosystem participants to the benefit of the municipality, private enterprise, consumers
- + Intelligence gained through continuous operation to drive improvement

Data

The city should *feel* intuitive and “smart” to those within it.

Individual Functions Getting Smarter



Enabled by...

Microtechnology
Sensors / SOC

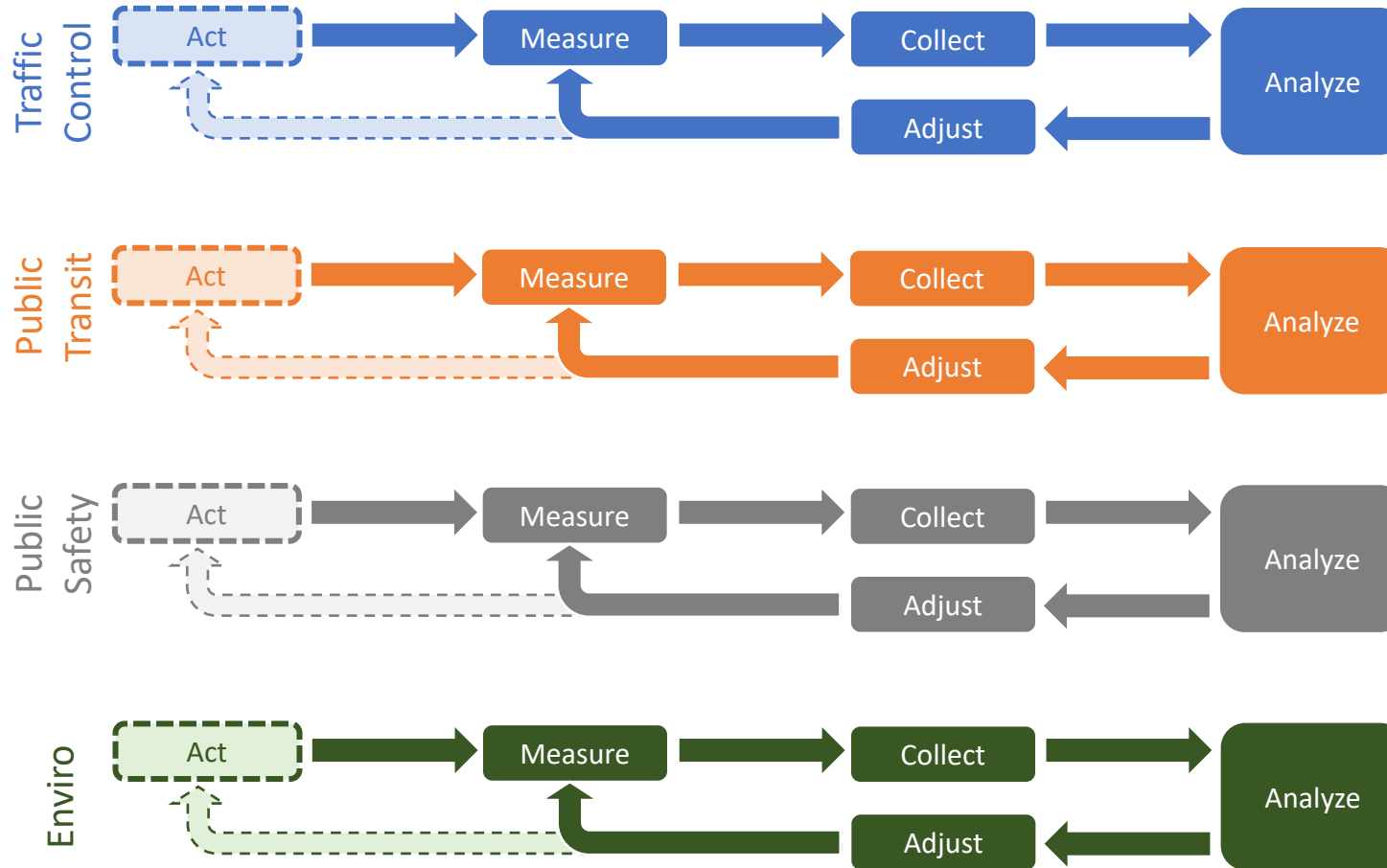
Communications
Fiber / Wireless / 5G

Compute
Local / MEC / Cloud

Software
Data Science / AI / ML

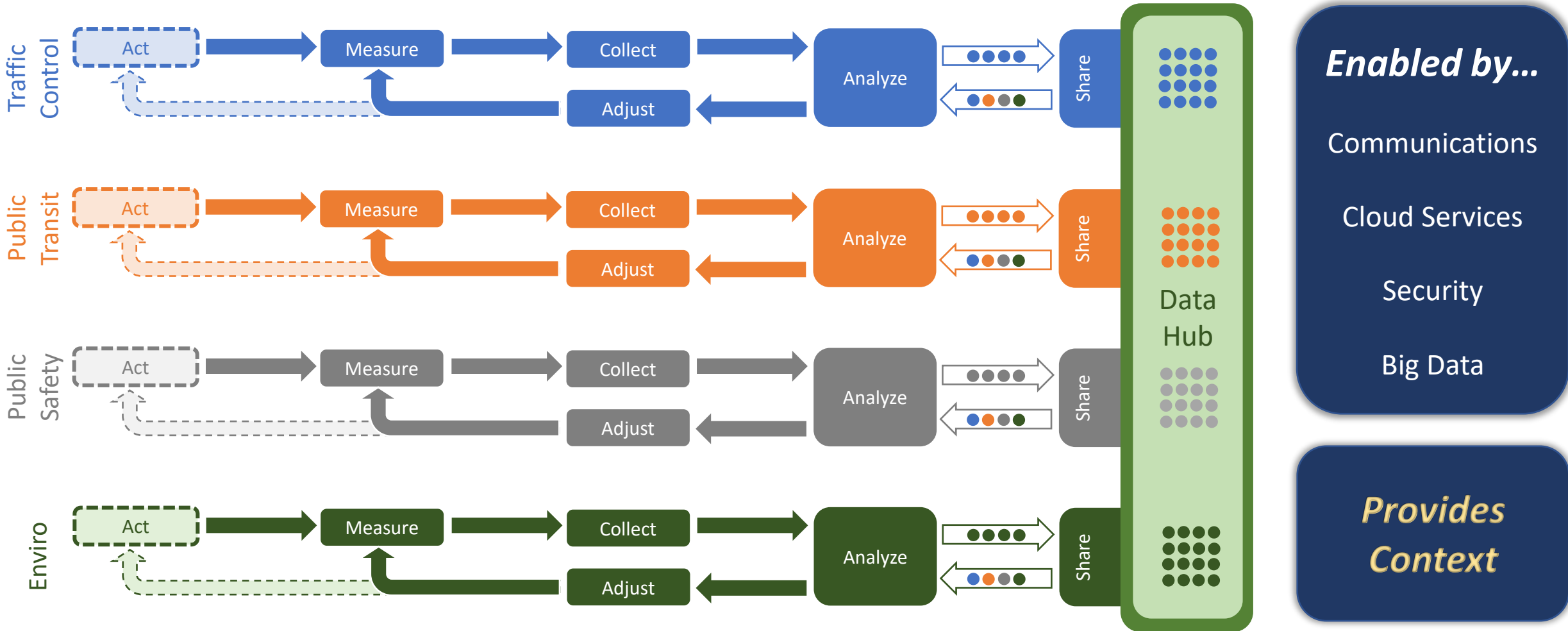
Storage

Individual Functions Getting Smarter

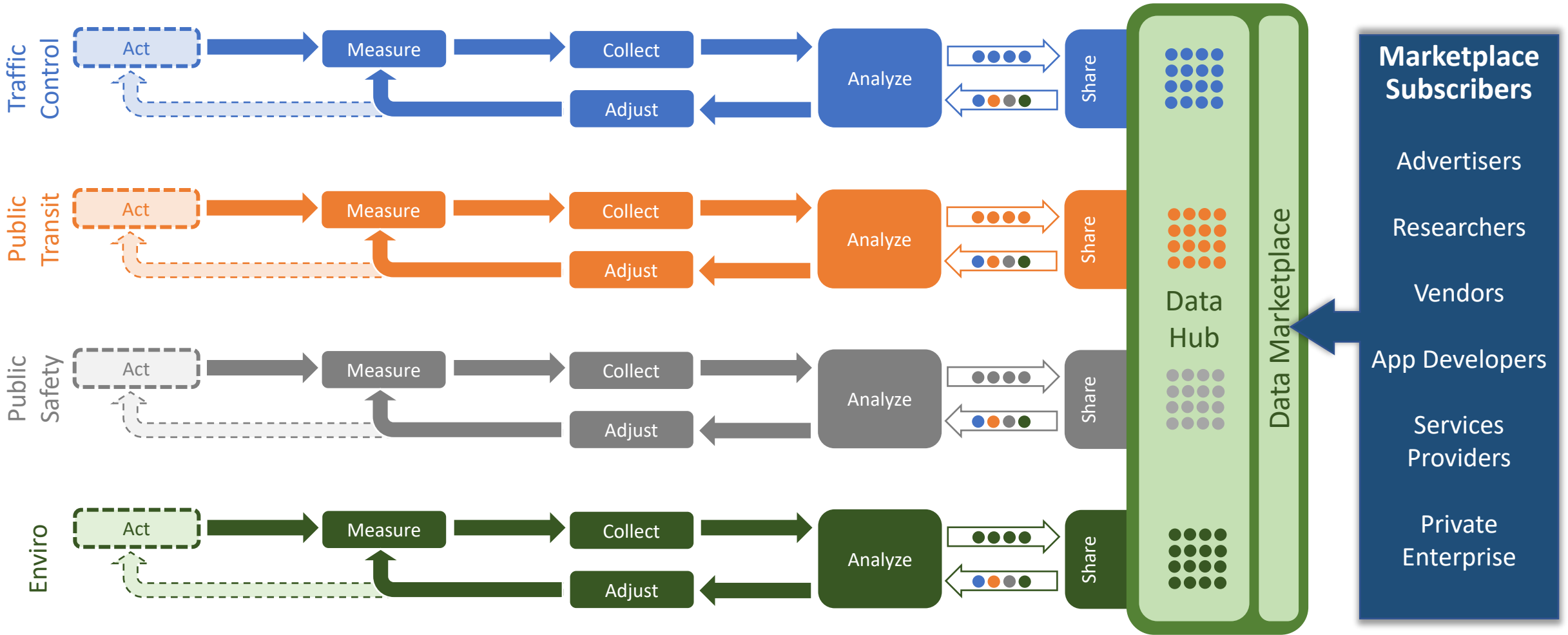


Smarter individual functions, subfunctional coordinated


Smart City Platform - Individual Functions & Cities Getting Smarter



Open / Monetizable Data Marketplace – Value Creation



Wi-Fi's Role in Smart City

A stylized illustration of a smart city. In the foreground, a person is walking and using a smartphone. To the right, a person is walking near a subway entrance labeled 'SUBWAY'. In the background, there are various buildings, including a large stadium-like structure with flags on top. An orange truck and a red car are on the street. An orange airplane is flying in the sky. Numerous Wi-Fi signal icons are scattered throughout the scene, indicating a pervasive network. The color palette is primarily blue, grey, and orange.

- Smart city operations resemble industrial IoT platforms
 - Enabled by an array of communications and wireless protocols fit for purpose
- Wi-Fi is the universal consumer & 3rd party interface to the smart city
- Unlicensed spectrum allows all to participate
- Small cell architecture enables context-based user engagement
- High fidelity location analytics describing pedestrian traffic flow

Confidential

7/9/2021

Historical Wi-Fi Challenges



Device On-boarding



Wireless Security



Identity & Entitlement Management



Service Quality

Wi-Fi Enabled Smart Cities

- Add Wi-Fi access to the Smart City Platform
- Utilize a Passpoint-enabled wireless roaming hub
- Smart City sponsored profile distribution management
- Contribute to the data hub & marketplace
- Enable brands and venues to retain their user experience



Confidential

Smart City Wi-Fi Enabled by Passpoint

- + Standard interfaces for public and private networks, and identity providers
- + Standard wireless encryption
- + Standard for location description
- + Central management of access service advertisements
- + Aggregation point for transactional data & reporting
- + QoS monitoring
- + Monetization opportunity

Wi-Fi's Role in a Smart City Ecosystem

- Serve as the standard for end user engagement
- Provide ubiquitous connectivity
- Enable venues to participate
- Contribute location data to enrich data hub

7/9/2021

Confidential



Collaboration in Smart City Ecosystem

Questions?

Thank You!

Blaz Vavpetic, Chief Technology Officer

blaz@singledigits.com



Future of WBA OpenRoaming & Convergence

STEVE NAMASEEVAYUM

Director, Membership & Industry Alliances

Wireless Broadband Alliance

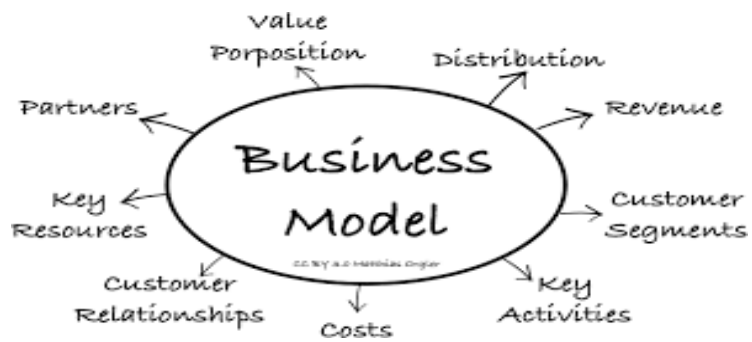




FUTURE OF OPENROAMING & CONVERGENCE

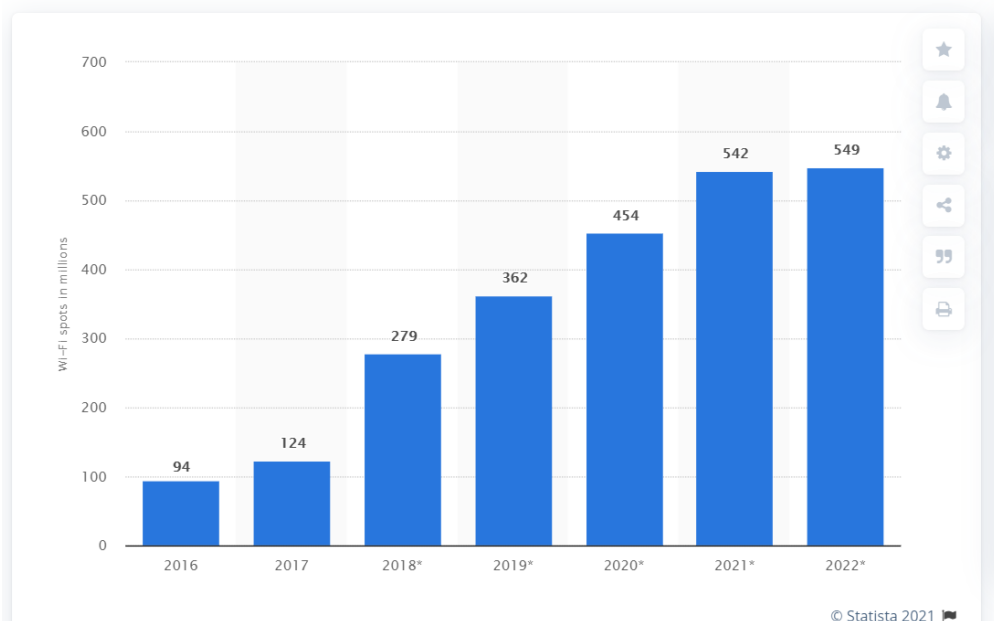
30th June 2021

- **Technologies**
- **Industry Verticals**
- **Industry Players**
- **Business Models**

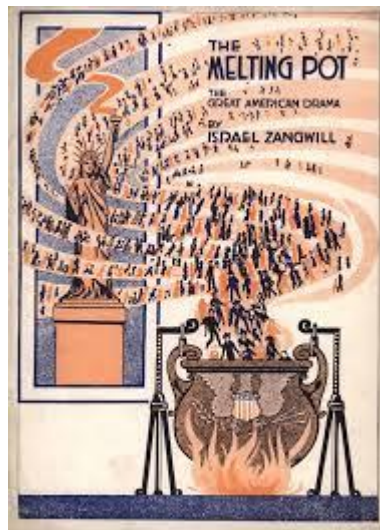


Number of public Wi-Fi hotspots worldwide from 2016 to 2022

(in millions)



**MELTING POT OF
WI-FI CONFUSION**



***SSIDs, Username &
Password, SMS
Authentication, Advertising
Open Networks, Vouchers,
Apps, SIM-Based Auth,***



***Poor User Experience, Poor
User Engagement, Bill
Shock, MAC Randomization,
Unsecure Wi-Fi, Data
Privacy Breaches***

OPENROAMING TECHNOLOGY



What it means

Next Generation Hotspot (NGH) stands for an end-to-end Wi-Fi Roaming experience, achieving the seamless, secure and interoperable experience set as a benchmark.

A “cellular-like experience” - Turn on device and get automatic, secure Wi-Fi connectivity.

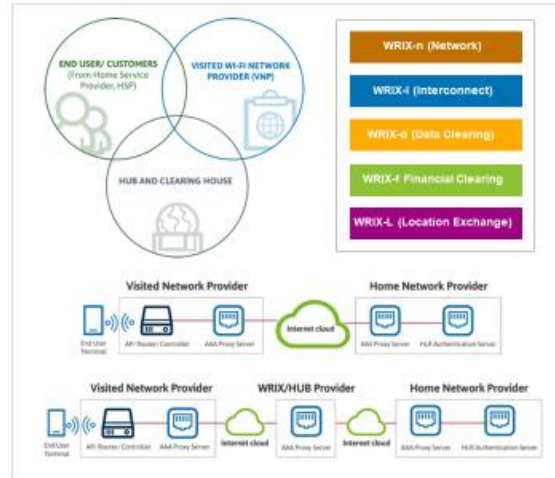
Passpoint®

Or can also be known as Hotspot 2.0 Technical Specification – by the Wi-Fi Alliance for an automatic, seamless and secure authentication to a Wi-Fi network.



Wireless Roaming Intermediary eXchange (WRIX) Framework

And a best practices framework developed by the WBA for the state-of-the-art Wi-Fi Roaming experience from a technical and business standpoint.



[WBA WRIX UMBRELLA DOCUMENT AVAILABLE HERE](#)

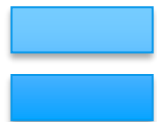
[NGH WI-FI ROAMING GUIDELINES AVAILABLE HERE](#)

OPENROAMING TECHNOLOGY



WBA Members developed a robust program to scale Wi-Fi Roaming

	Titles	Objectives	Stakeholders / Roaming Partners
Roaming Evolution Modular Building Blocks	WBA Roaming Consortium Federation (RCOI) 	<ul style="list-style-type: none"> Simplifying partner discovery and onboarding Implement new business models across verticals (IoT, SP's, Healthcare, etc.) 	Stakeholders / Roaming Partners Operators/ Identify Providers Infrastructure Vendor Roaming HUBs Shopping Malls and Chains Cities Hospitals & Healthcare Stadiums Schools & Universities Hospitality
	"WBA ID" for Roaming, Data & Financial Clearing 	<ul style="list-style-type: none"> Simplifying and normalizing information exchange (interoperable with GSM/TADIG) Possibility of performing accounting, billing, invoicing, charging across federations 	
	Certificate Based Roaming (RadSec / PKI Server) 	<ul style="list-style-type: none"> Simplify and automate security to enable scalable roaming relations Evolved roaming architecture to bridge the divide between federations (integrated signaling, reporting, policy) 	
	NGH Provisioning – Single SSID (Passpoint R3) 	<ul style="list-style-type: none"> Improve customer experience on NGH networks by eliminating barriers (devices & infrastructure) Automated profile provisioning across service providers and use cases 	



WBA OpenRoaming™

(Seamless Connections, Secure Wi-Fi, Data Privacy)



OPENROAMING'S APPLICABILITY IN ANY VERTICAL



One Global Wi-Fi Network

WBA OpenRoaming™ creates the framework to connect billions of users and things to millions of Wi-Fi networks globally



OPENROAMING FOR HEALTHCARE

In the healthcare environments guest wireless is a lifeline to staff, friends and family, social groups, etc. Connectivity to the resources they need during their visit is happier, and as a result more satisfied with their service.

Patients and visitors want reliable and seamless connectivity system, across campuses, at different locations, in the hospital. Connectivity to the resources they need during their visit is happier, and as a result more satisfied with their service.

With that in mind, some challenges facing wireless guest network are complicated Wi-Fi onboarding challenges and poor segmented MAC rotation is disrupting how many brands are managing high data demands, and privacy. These can all have a negative impact on the guest's experience and by association their loyalty to your brand and compliance to your brand standard. If this experience could be addressed throughout their holiday or business trip across different venue types and different transport modes, satisfaction levels and customer experience can reach new heights.

This is where WBA OpenRoaming comes in. It is designed to enable machines can connect to the network, with no lengthy and required. Connection to the network happens simply and securely from the user.

OpenRoaming provides automatic and seamless, secure system and across campuses and enhances the patient experience.

In addition, traveling / visiting doctors and nurses are also systems. These mobile workers that travel between hospitals can utilize the automatic and seamless connectivity instantaneous access to the resources they need so they can



One Global Wi-Fi Network

WBA OpenRoaming™ creates the framework to connect billions of users and things to millions of Wi-Fi networks globally

OPENROAMING FOR HOSPITALITY

In recent years, Wi-Fi availability is rated as one of the top 3 factors why a guest will choose to stay at a hotel. For hotels around the world, providing a great guest Wi-Fi experience is not optional, it's essential.

To that end, what defines a great guest Wi-Fi experience, and are you delivering it? Your guests may have great connectivity in their bedroom or in the hotel bar, but what about in the conference center with many people trying to simultaneously connect? Are your staff required to be connected to Wi-Fi in order to better serve your customers?

Common issues such as friction in different parts of the hotel, concerns about security, high data demands, and now MAC Randomization is disrupting how many brands are managing user identification. This can have a negative impact on the guest's experience and by association their loyalty to your brand and compliance to your brand standard. If this experience could be addressed throughout their holiday or business trip across different venue types and different transport modes, satisfaction levels and customer experience can reach new heights.

OpenRoaming provides seamless, secure access throughout the property, to other properties and other places your guests visit throughout their journey and OpenRoaming can enhance your loyalty proposition.



One Global Wi-Fi Network

WBA OpenRoaming™ creates the framework to connect billions of users and things to millions of Wi-Fi networks globally

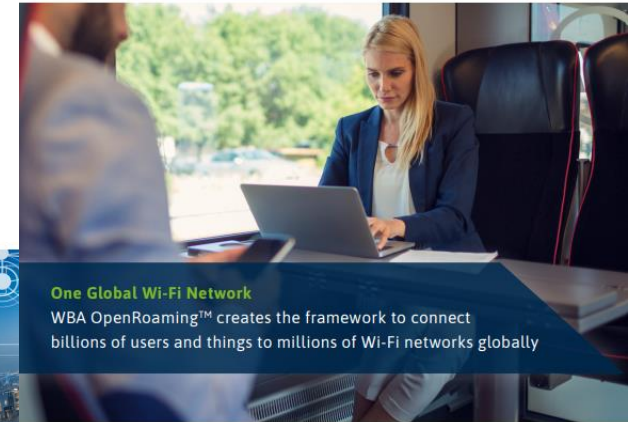
OPENROAMING FOR CITIES & PUBLIC SECTOR

The use of Wi-Fi across cities and the public sector has grown in popularity since the early noughties/2000's, reinforced with the recent COVID19 Pandemic. From outdoor public spaces, to indoor municipal use in areas such as libraries and public spaces in offices and education, society's increasing reliance on staying connected at all times and wanting constant access to information on the move demands a great customer experience. That is without mentioning smart city enablement!

Residents, students, visitors and businesses want a seamless and secure experience when connecting to Wi-Fi but all too often they get a poor first-time user experience when trying to connect to networks. This manifests itself through a frustrating and repetitive user authentication process and ongoing concerns about security.

Today, security and privacy in Public Wi-Fi is critical for all responsible decision makers who are looking to avoid open access Wi-Fi and/or share passwords that create an unrealistic sense of security for users. Additionally, while many networks continue to rely on MAC identification, the industry as a whole is moving towards MAC Randomization, implying that new security models and user identification must be put in place. For this reason, WBA members have been working on this matter to ensure that better and more secure Wi-Fi is available to all.

WBA has created a roaming federation service called OpenRoaming™ which addresses these issues by providing all the building blocks necessary to enable a Smart City for public Wi-Fi and other public services. Citizens are able to stay connected in virtually any location across the city while not having to worry about potential security risks, ensuring cities and public spaces are more friendly to businesses, visitors and residents alike, enabling a city of innovation.



One Global Wi-Fi Network

WBA OpenRoaming™ creates the framework to connect billions of users and things to millions of Wi-Fi networks globally

OPENROAMING FOR GROUND TRANSPORTATION

Trains, Buses, Underground and Road

What happens when our day is paused? The majority of people on different modes of public transportation – such as a train or bus – will immediately reach for their smartphone or tablet – whether it's to check messages, to do some work or just to enjoy some entertainment while having some downtime.

However, problems can arise the moment you attempt to connect to the transportation's Wi-Fi network. How do I connect? Do I need a username or password? Will the network recognize me from my previous connections? Should I worry about security risks?

Companies responsible for deploying these networks are also concerned about delivering a good experience for passengers, and staff and need to be aware of any necessary operational guidelines or experience. Additionally, MAC Randomization is threatening to disrupt how user identification is managed.

This is where WBA OpenRoaming comes in. It is designed to drastically simplify how passengers and staff connect to the network, with no lengthy and repetitive sign-up or connection process required. From carriage to platform to subway and beyond, connecting to the network happens simply and securely without any further actions needed from the user.



One Global Wi-Fi Network

WBA OpenRoaming™ creates the framework to connect billions of users and things to millions of Wi-Fi networks globally

WHAT IS WBA OPENROAMING™?

WBA OpenRoaming™ is a roaming federation service enable With WBA OpenRoaming™, we are creating an open ecosystem to power new opportunities in the 5G era. It enables



Cloud federation

Creates a federation of networks and identity onboarding on Wi-Fi. Based on WBA's Wireless to scale and facilitate different business models



Cyber security

Enables simple, secure and scalable Wi-Fi connections amongst different organizations that are part of WBA OpenRoaming™. Allowing automatic and secure roaming between millions of networks, nationally and globally with secured interconnection and encrypted communications.



Network automation

Defines an automated roaming consortium codes framework (RCO) to support policy provision on devices and networks. Organizations that manage a Wi-Fi CERTIFIED Passport™-enabled network may become part of the WBA OpenRoaming™ federation.

WBA OpenRoaming™ transforms the Wi-Fi experience for consumers and businesses and ultimately opens up opportunities for broadband and the Internet of Things (IoT) connectivity across business verticals, including retail, hospitality, education, smart cities, automotive and aviation, among many others. Devices simply connect automatically and securely on to the WBA OpenRoaming™ network.



Exemplative

WBA OPENROAMING – ECOSYSTEM PLAYERS



Growing Ecosystem of Brokers / Identity Providers / Network Providers



- **More than 70 organizations involved**
- **Exemplative**

WBA OPENROAMING IN ACTION



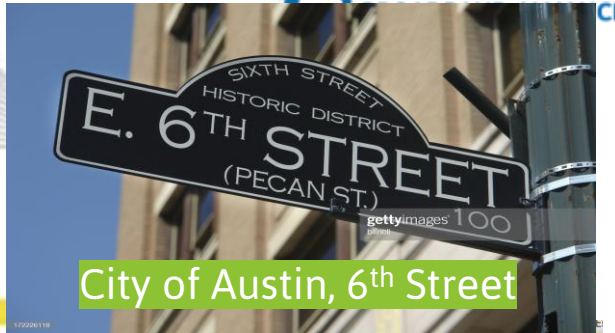
Canary Wharf, London



Palma de Mallorca, Spain



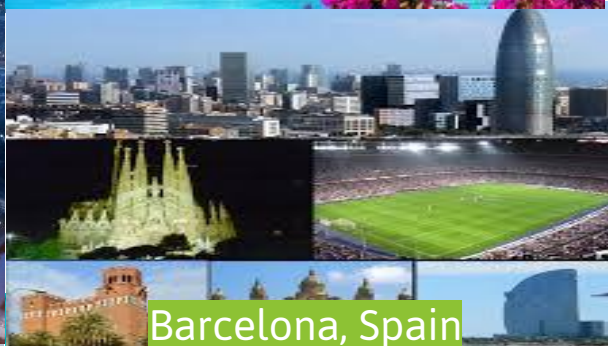
WiFi4EU



City of Austin, 6th Street



London Stadium



Barcelona, Spain



Olné, Belgium



OPENROAMING
WIRELESS BROADBAND ALLIANCE



Westfield Malls



Spanish Cities & Islands
Cityroam, Japan and



Tervuren, Belgium



CEFCU (San Jose State)



Adventist Health



San Jose State University, USA



Clair Global



Sao Paulo Airport, Brazil

OpenRoaming Standard - Release 1 Settlement “free” traffic

WBA OpenRoaming

The Framework to Support WBA’s Wi-Fi Federation



Source: WBA
Author(s): WBA Members
Issue date: May 2020
Release: 1.0
Document status: Final



OpenRoaming Standard - Release 2 Settlement “paid” traffic

WBA OpenRoaming

The Framework to Support WBA’s Wi-Fi Federation



Source: WBA
Author(s): WBA Members
Issue date: June 2021
Release: 2.0.0
Document status: Final



“Baseline” QoS for Service Availability & Bandwidth

“Silver” QoS for Service Availability & Bandwidth

OPENROAMING FOR DIFFERENT BUSINESS MODELS



Free



Advertising



Loyalty Program



Customer Retention



Analytics



IoT



Offload & Roaming



Customer Retention

One Global Wi-Fi Network

VISION: Provide Automatic & Secure Wi-Fi Everywhere to Everyone

MISSION: Create an open framework for all types of players to develop their Wi-Fi services and business



STEP 1



Sign up for WBA OpenRoaming™
(Inclusive for WBA Members)

STEP 4



Select your business model and partners that are members of WBA OpenRoaming™

STEP 2



Adopt the WBA OpenRoaming™ framework and standards

STEP 5



Configure your network and/or customer devices

STEP 3



Choose the interconnect model and technologies

STEP 6



You are now part of the WBA OpenRoaming™ brand and are ready to **ROAM!** *Congratulations!*

OpenRoaming r1 launched
OpenRoaming r2 June 2021 (Settlement &/or QoS)



<https://wballiance.com/openroaming/join>



THANK YOU

WIRELESS BROADBAND ALLIANCE

WBA OpenRoaming / Roaming Consortium Codes / WBA Unique Organization ID / PKI Certificates

Get Involved OpenRoaming Now! PMO contact: pmo@wballiance.com



Panel Discussion



Steve Namaseevayum

Wireless Broadband Alliance



Blaz Vavpetic

Single Digits



Alphonso Jenkins

Formerly Deputy Commissioner for Telecommunications New York City



Robert Sokota

ZenFi Networks



Close

STEVE NAMASEEVAYUM

Director, Membership & Industry Alliances

Wireless Broadband Alliance



Wi-Fi Powering Innovation Series

Thursday June 3rd

Wi-Fi Innovations Connecting your World

- Social Impact of Wi-Fi – from powering the world economy to how Wi-Fi is helping the green agenda and bridging the digital divide.
- Future of Wi-Fi – the road ahead – overall market trends.
- Delivering the next generation wireless experience for carriers, enterprises, consumers and things.
- Regulatory updates for Wi-Fi 7, Wi-Fi 6E and OpenRoaming

Thursday June 10th

Connecting the Wi-Fi -enabled Enterprise

- How can Wi-Fi address the emerging needs of enterprise to innovate and thrive post COVID 19.
- Industry 4.0 & IoT: Emerging opportunities for Wi-Fi in the 5G era.
- Driving the connectivity revolution in retail and hospitality post COVID 19.
- Trains, planes and automobiles – connectivity into 2030.
- Marketing applications for Wi-Fi
- Private 5G and Wi-Fi

Thursday June 17th

Wireless Innovation, Operation and Customer experience – Where next for operators?

- The future of wireless networks.
- Delivering a gold standard public Wi-Fi experience – Seamless, secure, permission-based privacy.
- Testing performance and optimization monitoring.
- Wi-Fi 6E on the road to convergence & OpenRoaming
- Emerging technologies – Wi-Fi 7, FWA, 802.11be and beyond

Thursday June 24th

Wi-Fi Innovations For Hospitality

- Hospitality 2021 – What does the industry need from Wi-Fi operators and service providers.
- Delivering the next generation Wi-Fi experience in hotels and venues.
- Driving innovative marketing applications and analytics for the next decade.

Wednesday June 30th

Connected Communities Wi-Fi gets Smarter in the 5G Era

- Market trends and drivers for smart cities and connected communities.
- Protecting our citizens' privacy, security and identity.
- Addressing the digital divide through public Wi-Fi.
- The benefits of convergence of 5G and Wi-Fi 6E.
- Monetizing Wi-Fi and the opportunity case for cities and local business.

Thursday July 8th

Carrier Grade Wi-Fi delivering the future for the smart connected Home

- Market trends and drivers for residential Wi-Fi.
- Key enablers for the Work at Home Era post COVID 19.
- Delivering on the connected home experience – Next 5 years of IoT.
- Next Generation of Wi-Fi Capabilities for in-Home (sensing, mesh, AR/VR and more....)



Thank you to our Sponsors





THANKS FOR ATTENDING

Next Time:

July 8th - Carrier Grade Wi-Fi delivering the future for the Smart Connected Home

REGISTER NOW: <https://www.wirelessglobalcongress.com/registration/>

Find out more: www.wirelessglobalcongress.com
www.wballiance.com